



## THE LEGISLATIVE COUNCIL

CHAIRMAN  
JOHN W. CRUTCHER, LIEUTENANT GOVERNOR  
VICE CHAIRMAN  
JOHN CONARD, SPEAKER OF THE HOUSE  
SECRETARY  
JOHN C. WEEKS, REVISOR OF STATUTES

March 22, 1968

### SENATORS

JACK BARR, LEOTI  
GEORGE D. BELL, KANSAS CITY  
JOSEPH C. HARDER, MOUNDRIIDGE  
DON MATLACK, CLEARWATER  
KEITH G. SEBELIUS, HORTON  
REYNOLDS SHULTZ, LAWRENCE  
GLEE S. SMITH, LARNED  
WILLIAM H. WARD, MARION  
JOE WARREN, MAPLE CITY  
W. E. WOODARD, WICHITA

### REPRESENTATIVES

REX R. BORGES, ASHEVILLE  
JOHN D. BOWER, MCLOUTH  
EDWARD B. BOYD, LARNED  
W. LEE CAIN, INDEPENDENCE  
JOHN W. CASEBEER, MCPHERSON  
BOB COLDSNOW, WICHITA  
ROSS O. DOYEN, CONCORDIA  
WALTER FORD, ULYSSES  
BILL H. FRIDLEY, CRESTLINE  
JERRY L. GRIFFITH, DERBY  
CLYDE HILL, YATES CENTER  
WORDEN R. HOWAT, WAKEENEY  
JOSEPH M. MIKESIC, KANSAS CITY  
LAWRENCE D. SLOCOMBE, PEABODY  
CALVIN A. STROWIG, ABILENE

Representative LaVerne Spears,  
Chairman  
Capitol Area Planning Commission  
Rossville, Kansas 66533

Dear Verne:

The members of the Joint Committee on Legislative Facilities appreciated the opportunity to meet with the Capitol Area Planning Commission on March 19. As you know, our Committee recently gave some consideration to finding additional space in the State House that could be utilized by the Legislature. The State Architect assisted us in our study.

Since the Capitol Area Planning Commission apparently will soon be awarding a contract for a detailed study of space utilization and future space needs in the Capitol complex, priorities and goals should be established for the study. The Legislative Facilities Committee has several suggestions for your consideration of priorities that might be established. We think the suggestions meet some immediate and pressing needs and that they would assist the State Architect in his reconditioning work in the State House.


Our suggested priorities are the following:

1. Consideration should be given early in the study to moving the Supreme Court and its related offices and agencies, including the library, to a new or rejuvenated facility. Such a move would clear considerable space on the third, fourth and fifth floors of the State House.
2. Offices or agencies on the first or second floor of the State House which are not staff agencies of the Governor or which need not be located in the State House could be relocated. The Insurance Commissioner and Adjutant General are examples of offices that could be moved.

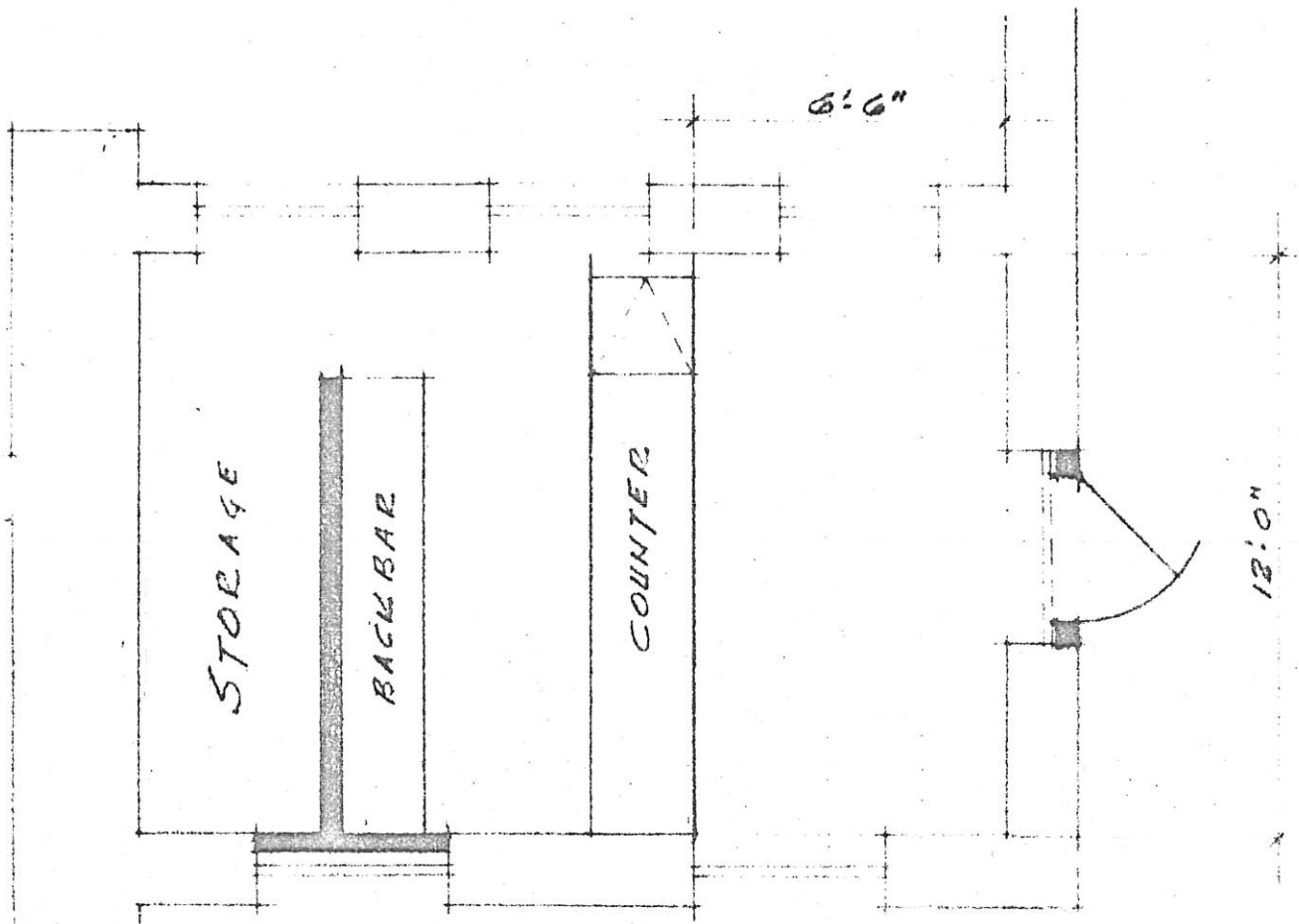
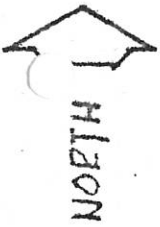
3. The Revisor of Statutes' office and the Research Department of the Kansas Legislative Council should be given more space and should be in close proximity to each other.
4. Consideration should be given to combining the House and Senate document rooms and post offices.
5. Space that is vacated in the State House should be studied from the viewpoint of accommodating the present and long-term needs of the legislature.

As previously mentioned, these items are suggestions of the Legislative Facilities Committee for your consideration in establishing the framework for the space needs study. We hope they will be of some assistance to you.

Sincerely yours,

  
Rep. Clyde Hill, Chairman  
Joint Committee on Legislative  
Facilities

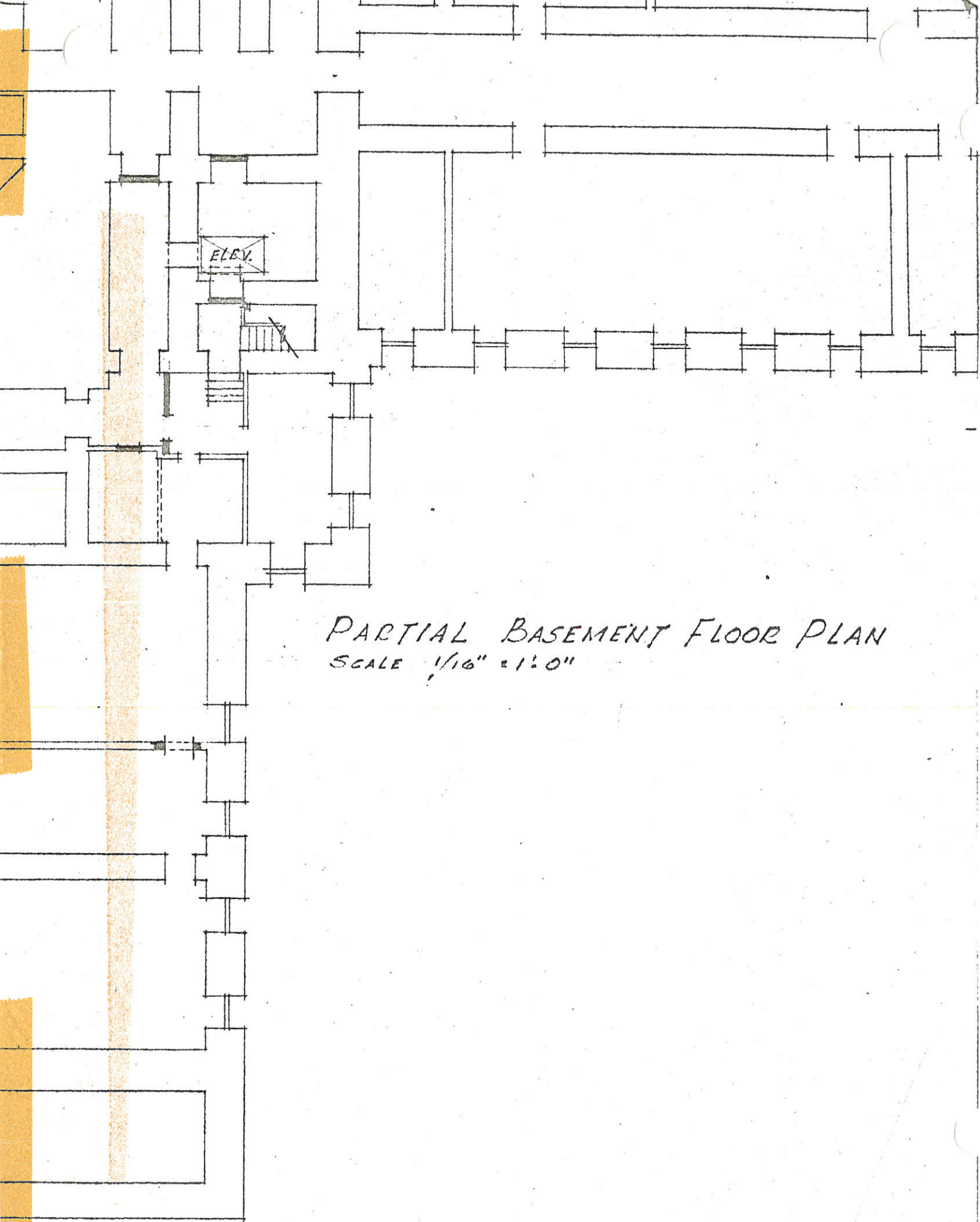
BB:sr



PLAN - WEST LIGHTWELL  
SCALE 1/4" = 1'-0"

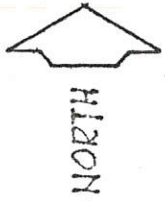
(CONVERTED TO COFFEE BAR)

ENTRANCE TO HOUSE



PARTIAL BASEMENT FLOOR PLAN  
SCALE 1/16" = 1'-0"

7/3/67



TO OFFICE BUILDING

ELEV.

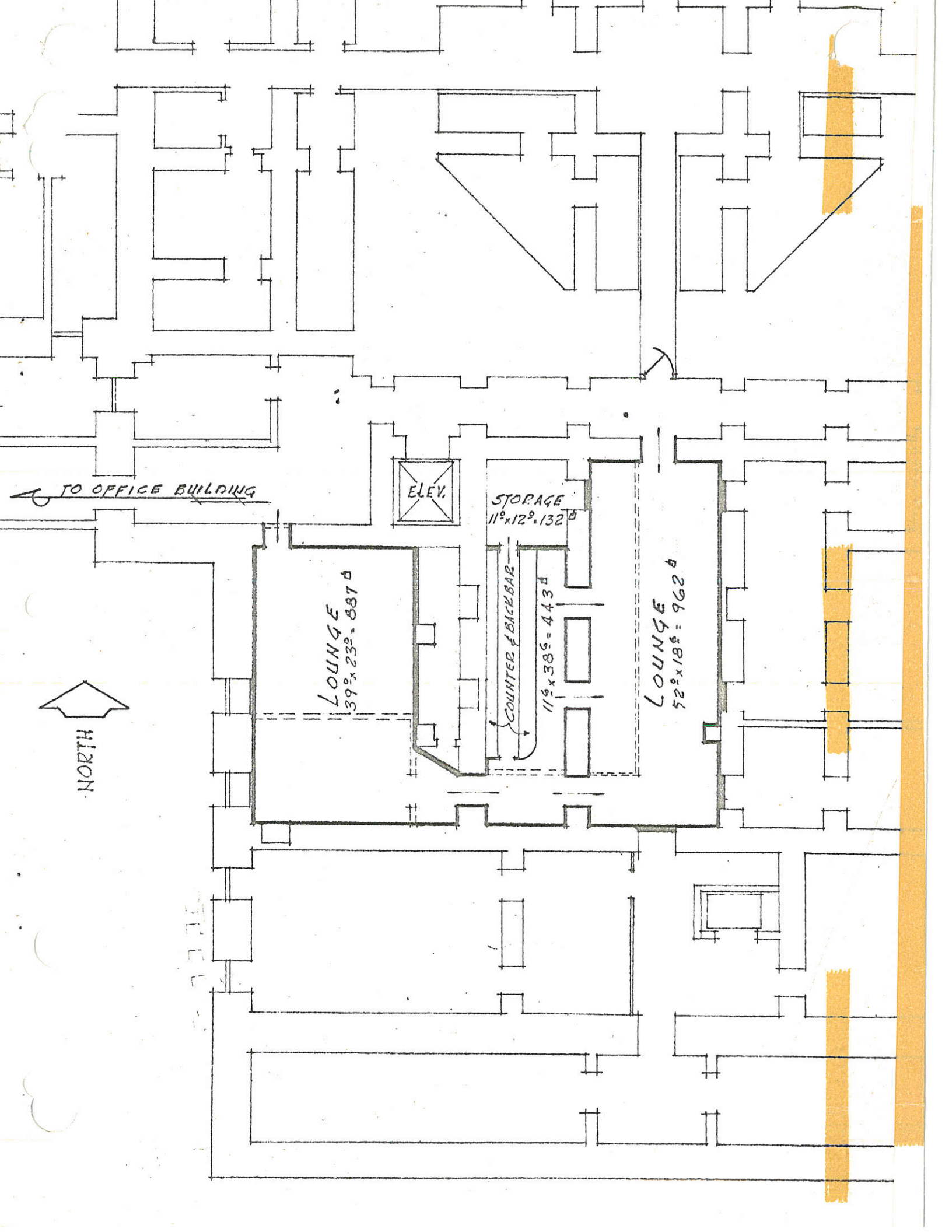
STORAGE  
11' x 12' = 132 sq ft

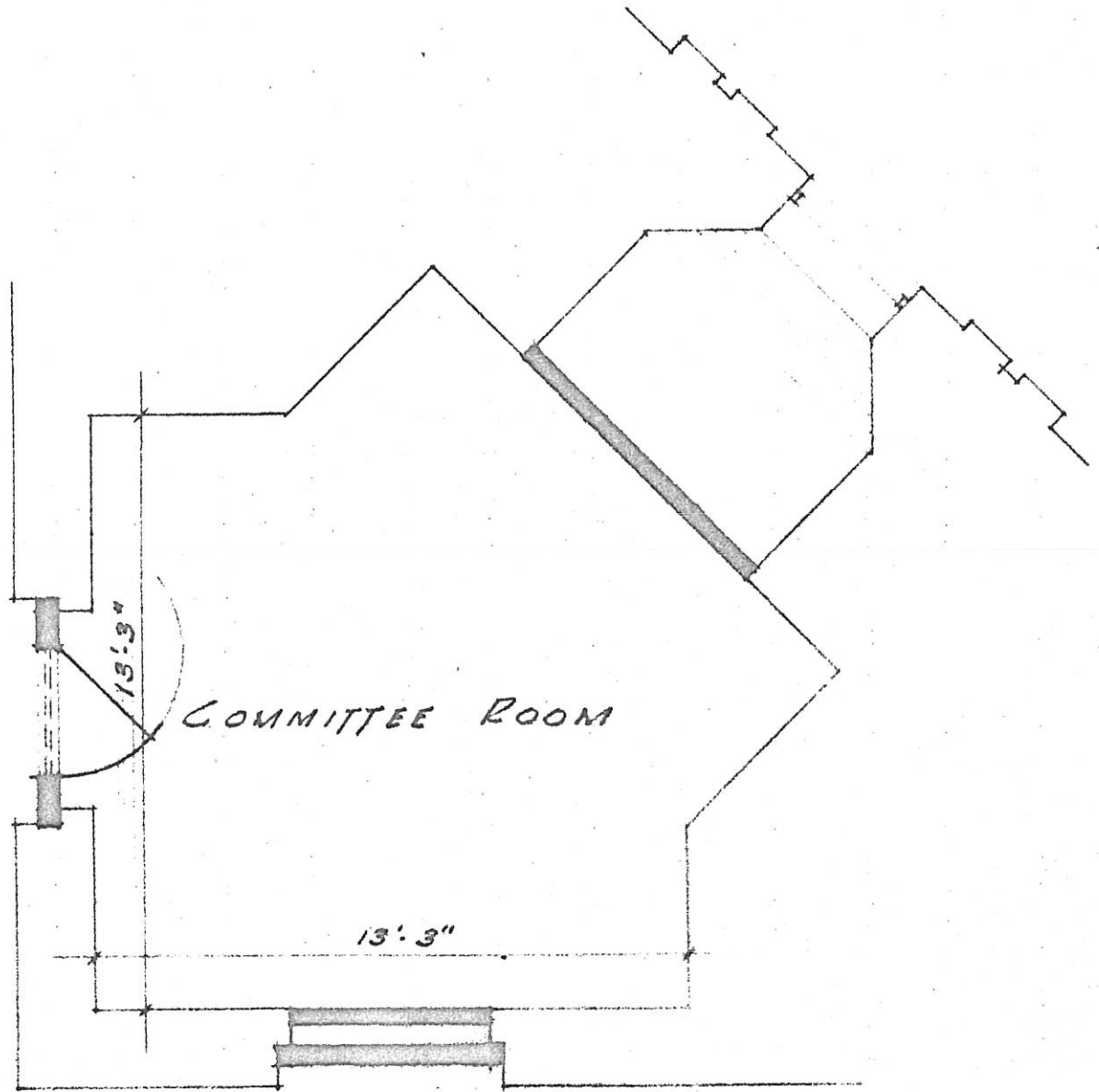
LOUNGE  
39' x 23' = 887 sq ft

COUNTER & BACKBAR

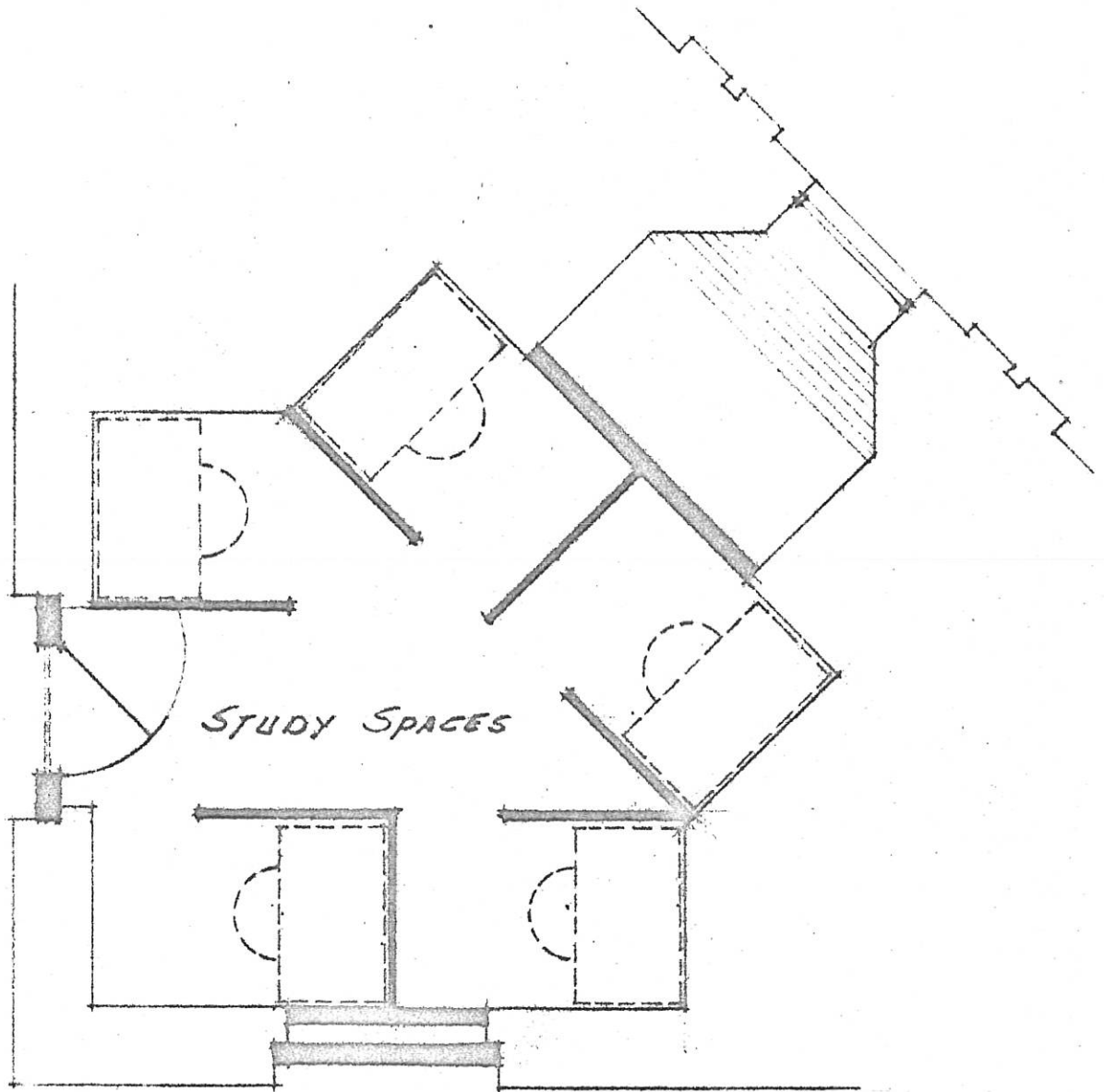
11' x 38' = 418 sq ft

LOUNGE  
52' x 18' = 936 sq ft

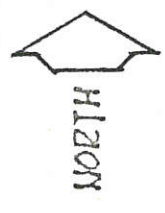
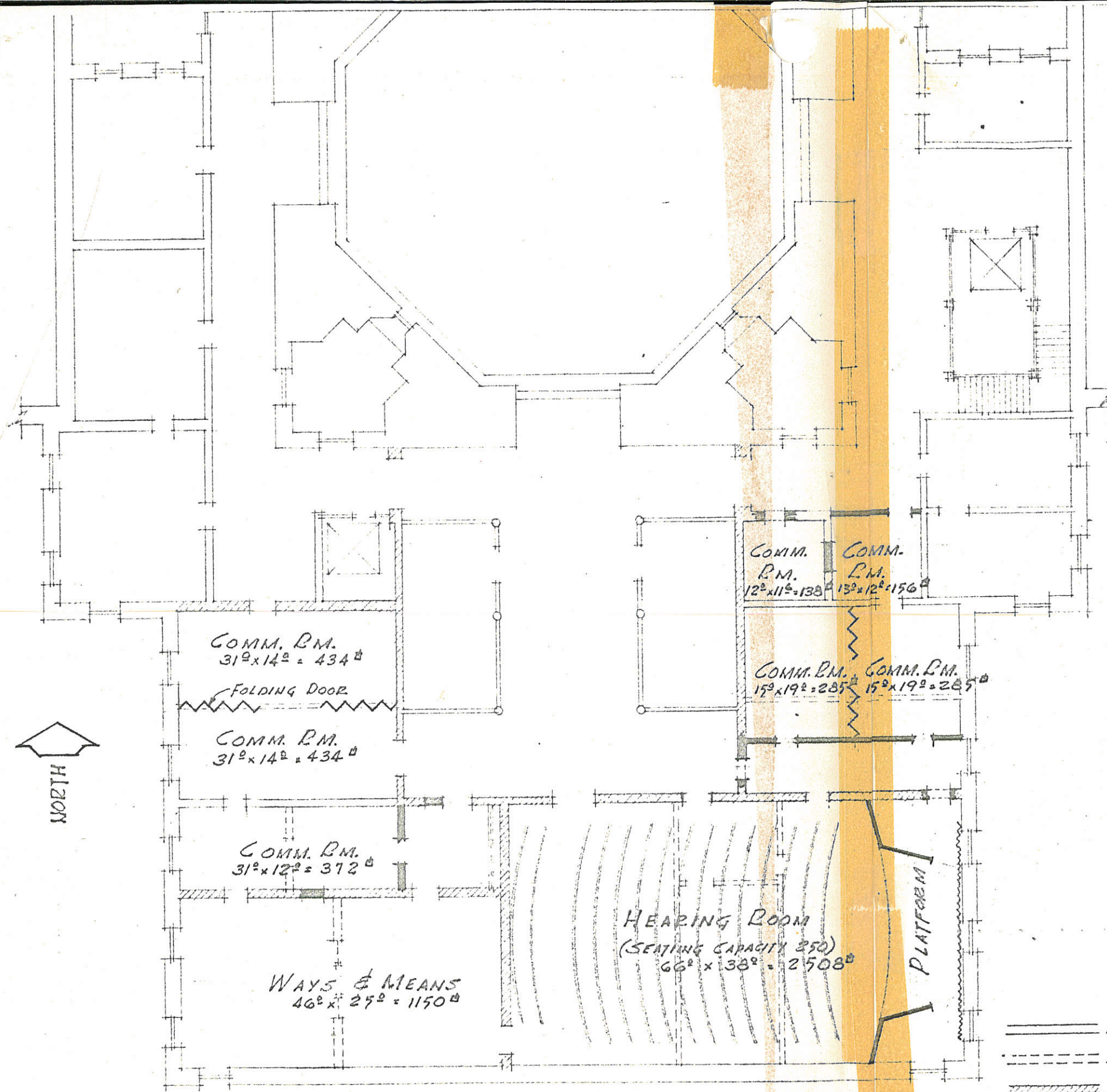




PLAN OF LIGHTWELL  
SCALE  $\frac{1}{8}'' = 1'-0''$



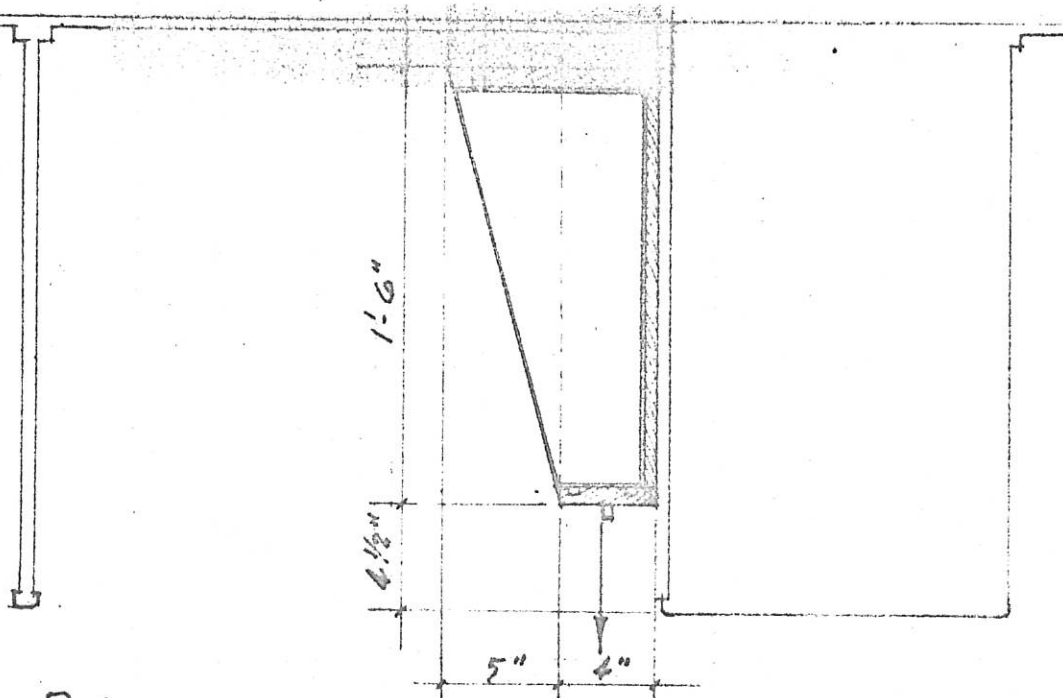
PLAN OF LIGHTWELL  
SCALE 1/4" = 1'-0"



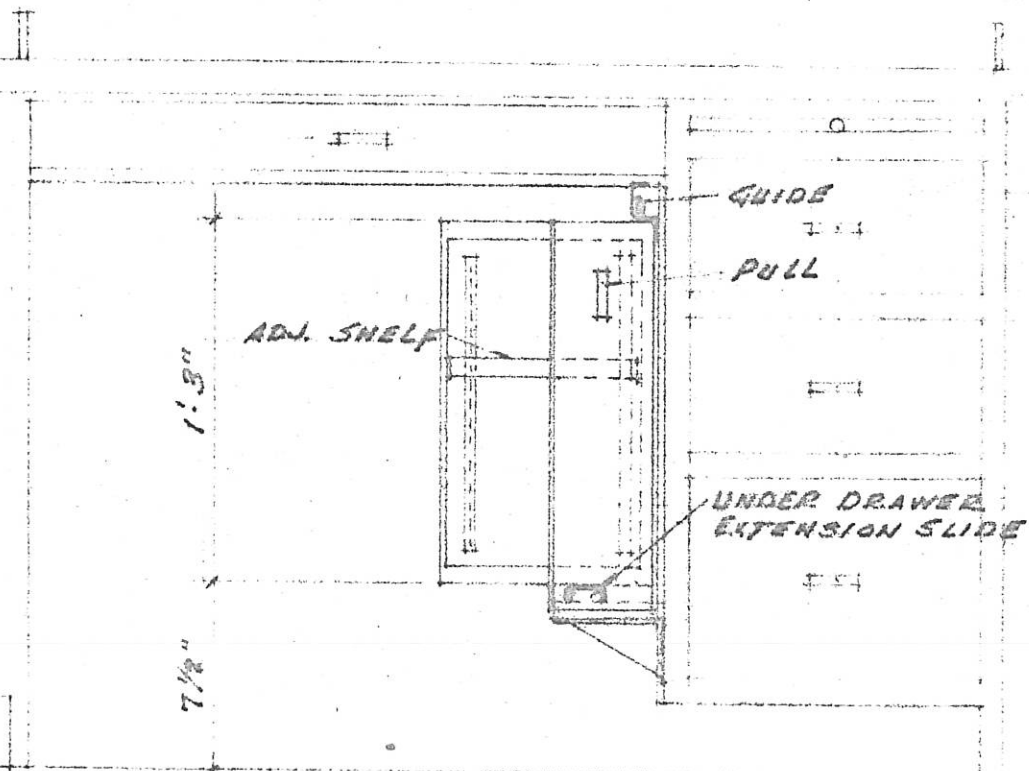
- ===== EXISTING PARTITIONS
- - - - - EXISTING PARTITIONS TO BE REMOVED
- ||||| EXISTING BEARING PARTITION
- ===== NEW PARTITION

PARTIAL FIFTH FLOOR PLAN  
SCALE 1/16" = 1'-0"





PLAN



ELEVATION

REPRESENTATIVE DESK  
SCALE 1 1/2" = 1'-0"