

# THE LESSER PRAIRIE-CHICKEN RANGE-WIDE CONSERVATION PLAN



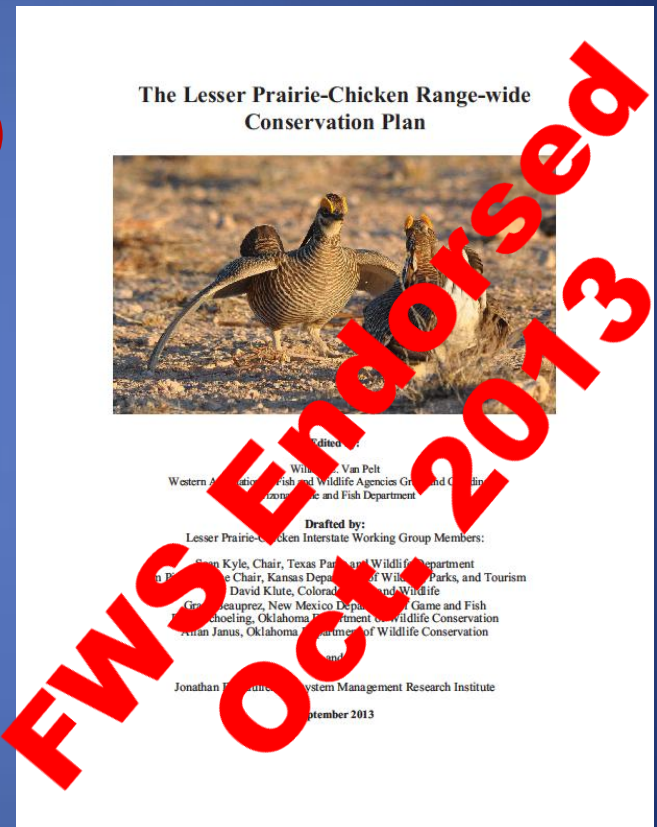
## Lesser Prairie-Chicken Interstate Working Group

*Jim Pitman, KDWPT; Sean Kyle, TPWD; Grant Beauprez, NMGF;  
Dave Klute, CPW; Allan Janus, ODWC; Bill Van Pelt, WAFWA;*

# LPC Range-Wide Conservation Plan

## Objectives

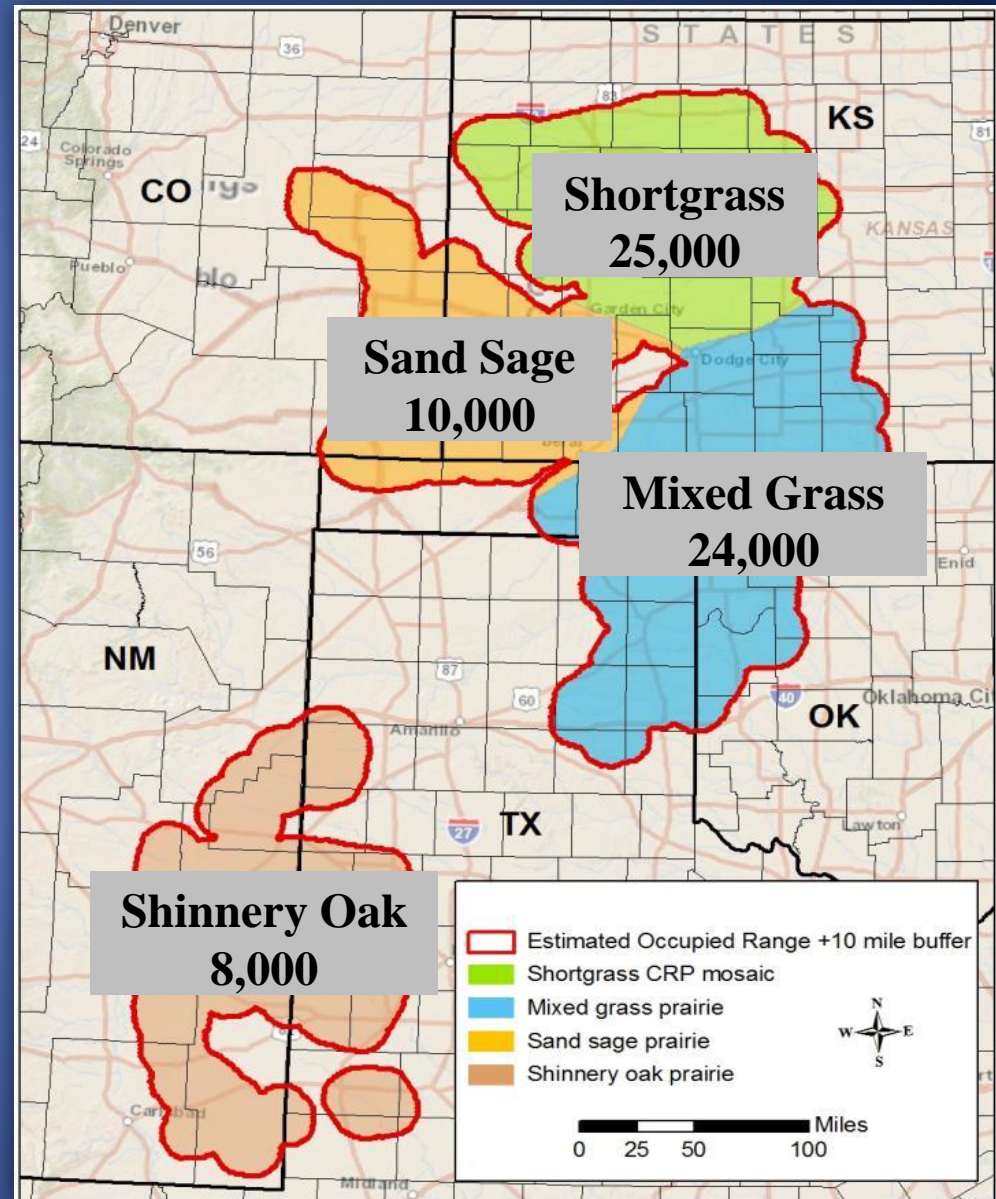
- Preclude the need for a federal listing through voluntary conservation
- Maintain State G&F Agency management of the LPC
- Provide take exemptions to industry and landowners
- Provide a pathway to delisting by unifying conservation efforts and establishing goals



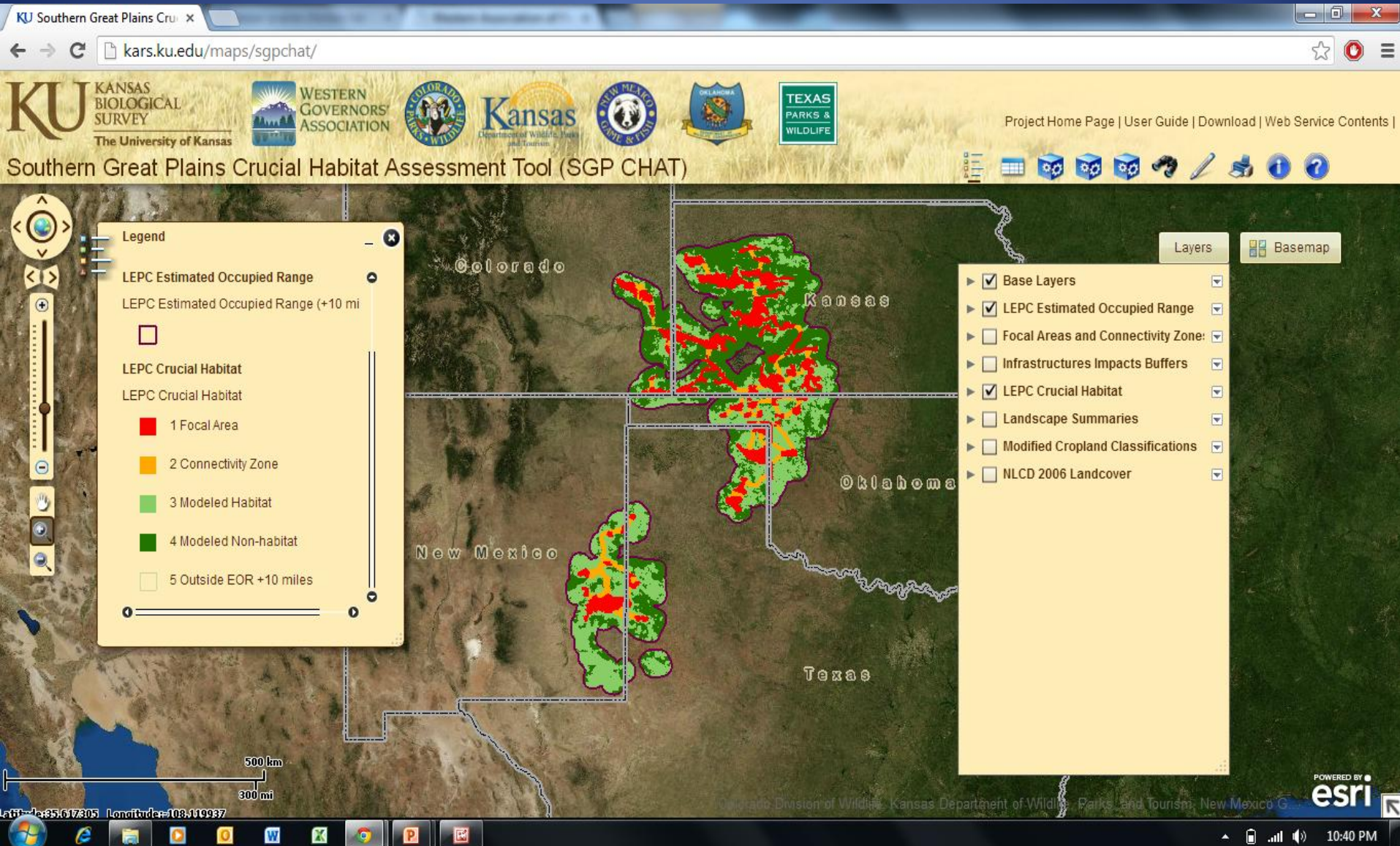


# Setting Management Scale and Breeding Population Goals

- Established 4 ecoregions
  - Achievable and sustainable
  - 10-year averages
- Range-wide goal of 67,000
  - Last achieved in 2006
  - Estimated at 22,415 during spring 2014



# Southern Great Plains Crucial Habitat Assessment Tool (CHAT)

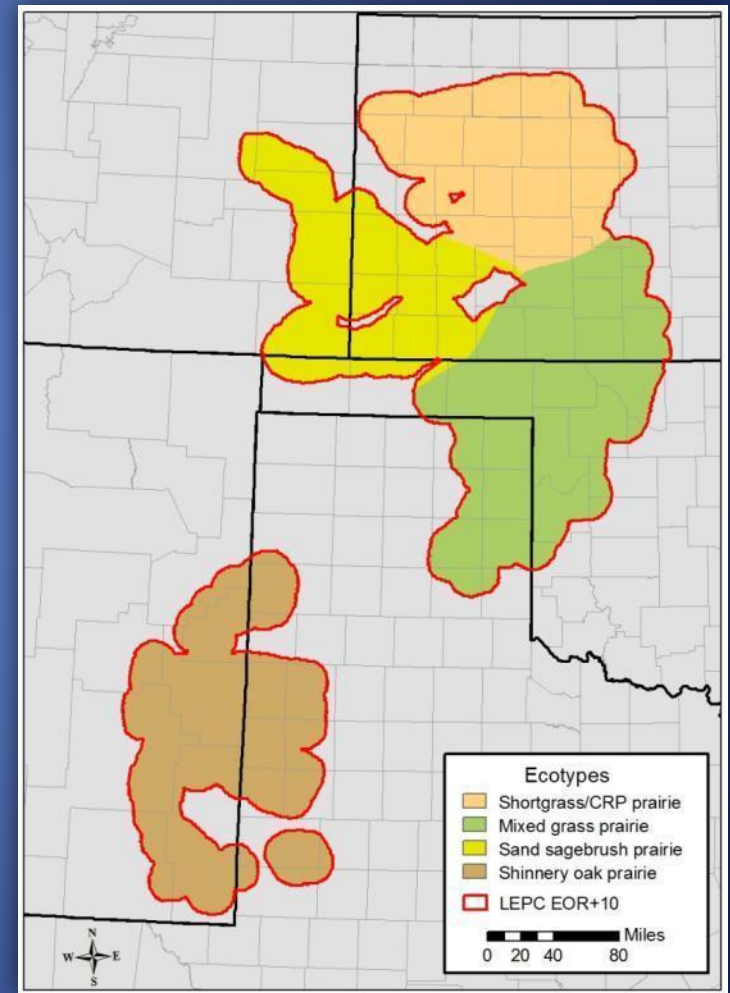




# WAFWA Mitigation Framework

## *General Structure & Process*

- Company must pay enrollment fee, follow specific conservation measures, and mitigate for individual projects
- 4 service areas matching ecoregions
  - **New impacts** must be offset prior to development (oil/gas waiver through March)
- Standard method to quantify & value habitat
  - Same method used for impacts and offsets



# Monetary Valuation of Habitat

Affected  
Acres

x

Habitat  
Quality

x

Mitigation  
Multiplier

x

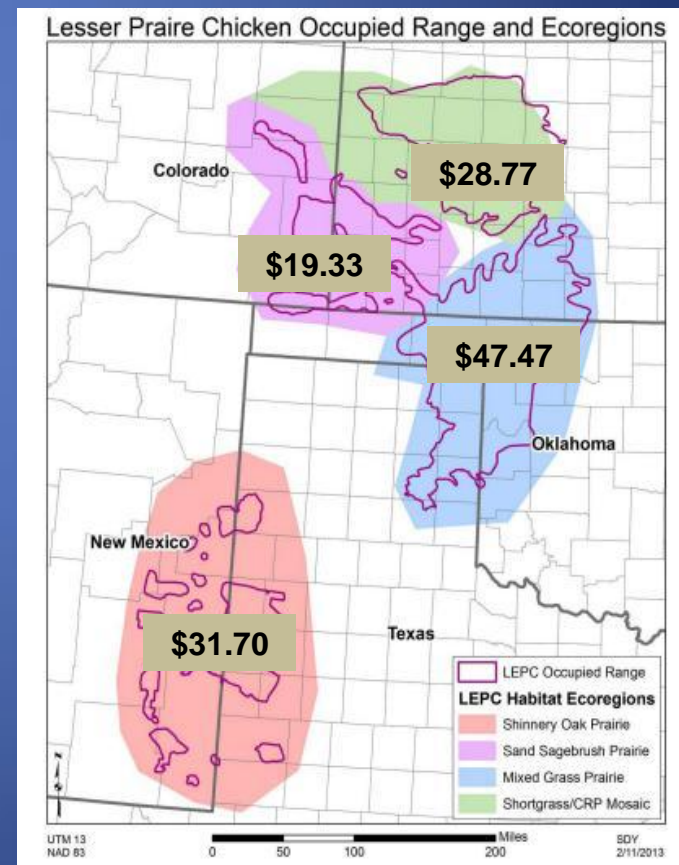
Impact  
Endowment  
Multiplier

- 1 unit = 1 acre highest quality habitat
- Values based on USDA estimated costs/acre to implement needed conservation

**Conservation Fee** = Impact units X unit value

**Admin. Fee** = Conservation Fee x 12.5%

**Total Fee** = Conservation Fee + Admin. Fee



# WAFWA Conservation Delivery System

- Applications accepted continuously
- Multiple contract options
  - 5 & 10 year contracts (75%)
  - Perpetual Easements (25%)
- Cut-offs to rank and fund offers
- Participants receive “take exemptions” for practices implemented as prescribed
- Payments exceed USDA rates by up to 35% for good habitat in high priority areas



# Program Administration

- Administered by WAFWA LPC Initiative Council
  - 5 Executive Directors from affected state wildlife agencies
  - 1 WAFWA executive committee member
- Adaptive management recommendations from Stakeholder Advisory Committee
  - Recommendations from Science & Fee Structure Working Groups



# ***Industry Enrollment & Mitigation Status***

*(as of 01/07/15)*

- 192 agreements with 176 different companies
  - 155 oil/gas, 19 pipeline, 15 utility, 1 utility & wind, 1 wind, & 1 telecom
- ~10 million acres enrolled
- 623 projects assessed
  - 611 oil/gas
  - 12 other impacts



# ***WAFWA LPC Financial Status***

***(as of 01/08/15)***

	Revenue	Expenses
Enrollment Fees	\$21,935,226. <sup>50</sup>	
Additional Impact Fees	\$13,605,768. <sup>61</sup>	
Accounts Receivable	\$1,379,965. <sup>48</sup>	
<b>Total</b>	<b>\$36,920,960.<sup>59</sup></b>	<b>\$1,028,813.<sup>87</sup></b>

The WAFWA executive committee selected RBC Wealth Management as the approved investment company. Funds were invested in December 2014 in two separate accounts. As per the business plan, 87.5% of revenue was placed in Conservation Operations and 12.% in Administrative Operation.

# Conservation Contract Status

(as of 01/14/15)

- Received >50 applications
  - 9 contracts have been offered
    - 5 executed , 2 pending, and 2 declined
    - 10-year financial commitment of an estimated \$7.7 million within executed and pending contracts

Service Area	Executed & Pending Contracts	Acres
Shortgrass	1	1,113
Sandsage	1	12,983
Mixed Grass	2	23,325
Shinnery Oak	3	18,880
<b>Total</b>	<b>7</b>	<b>52,529</b>

\* 2 executed contracts for Kansas properties and 1 pending





# *Conservation Easement Status*

*(as of 01/14/15)*

- No easements executed yet but agreements in place with 5 land trusts to identify properties and administer easements
  - The Nature Conservancy
  - The Conservation Fund
  - Pheasants Forever
  - Ranchland Trust of Kansas
  - Texas Agricultural Land Trust
- Goal of 25,000 acres in each service area within 10 years
- LPC council recently committed to funding a proposed property with some contingencies

# Projected Mitigation Credit Demand & Availability through Sept. 30, 2015

*(as of 01/14/15)*

Service Area	Known and Projected Credit Demand	Estimated Credit Availability from Executed and Pending Contracts	Deviation
Sand Sagebrush	3,609	8,889	+5,280
Shinnery Oak	603	9,805	+9,202
Shortgrass	885	293	-592
Mixed Grass	8,683	9,084	+401
<b>Total</b>	<b>10,645</b>	<b>14,034</b>	<b>+3,389</b>

\* Projections do not include a pending easement property or 2 additional landowner contracts recently initiated in Kansas to cover projected shortfall

# Questions





# Program Staffing

*(as of 01/07/15)*

- Established a business office in Boise, ID and hired a CFO, 2 Accountants, and 1 Admin. Assistant
- Contracted with Kansas Biological Survey for spatial analyses tasks
- Hired 2 Directors to oversee industry & landowner operations
- Pursing a Program Manager & 2 Industry Services Biologists
- Approved NRCS proposal to jointly fund 13 biologist positions held by Pheasants Forever for landowner services
- Additional staff will be added as necessary