



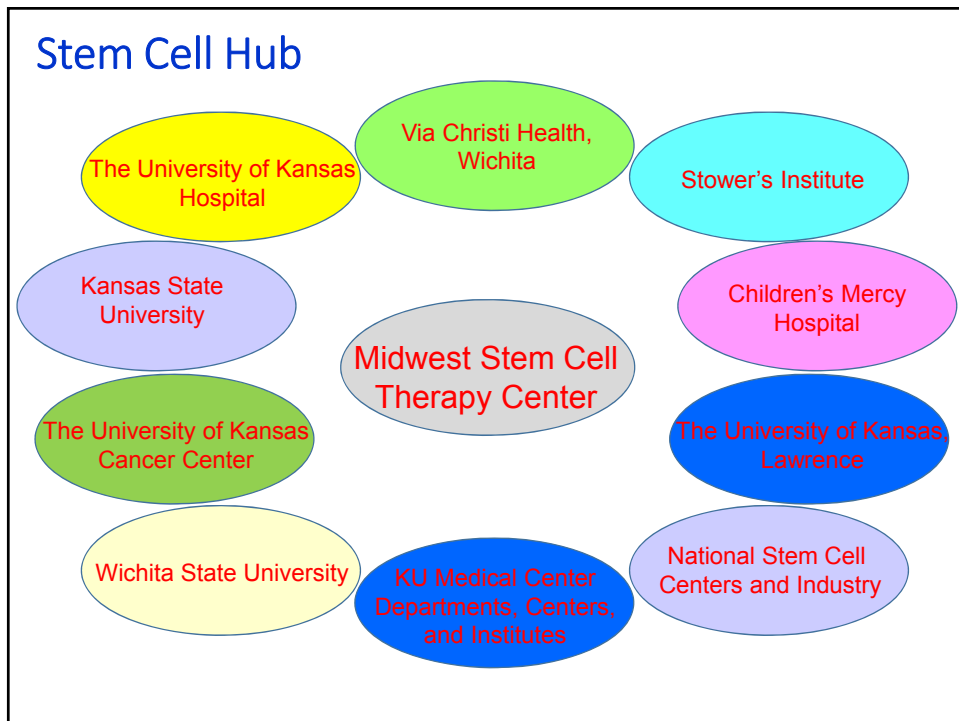
**Midwest Stem Cell
Therapy Center**

Status Update
February 8, 2016

Buddhadeb Dawn, M.D.
Director, Midwest Stem Cell Therapy Center

Maureen and Marvin Dunn Professor
Director, Division of Cardiovascular Diseases
Director, Cardiovascular Research Institute
University of Kansas Medical Center

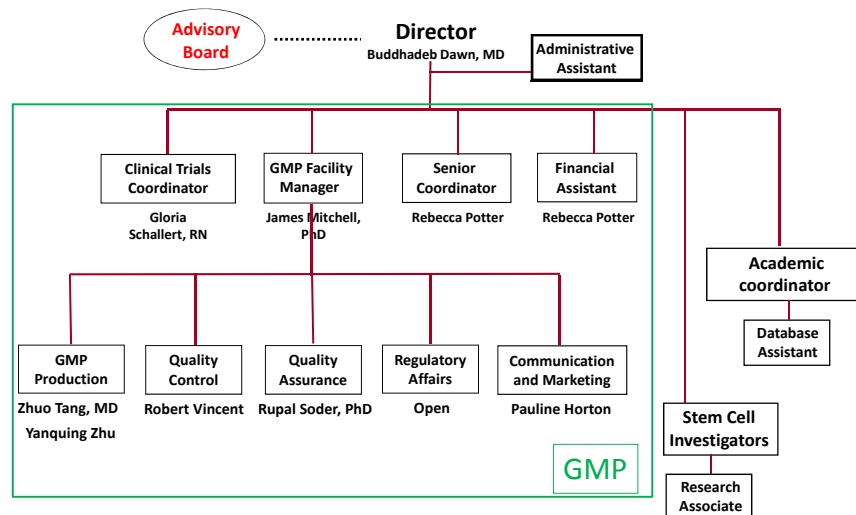





Objectives of the Center - I

- To *advance* adult, cord blood and related stem cell research and therapies for *patient treatment*
- To serve as a *core facility* to produce clinical grade stem cells
- To initiate *clinical trials* with adult, cord blood, and related stem cells

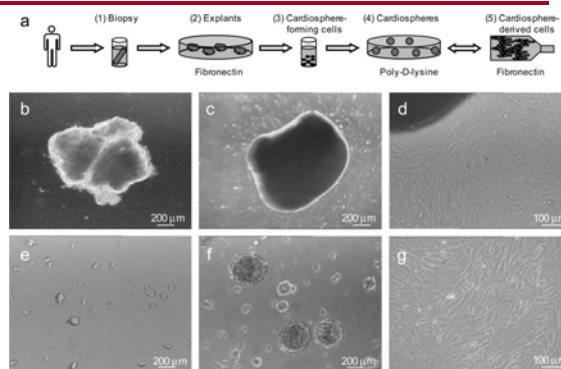
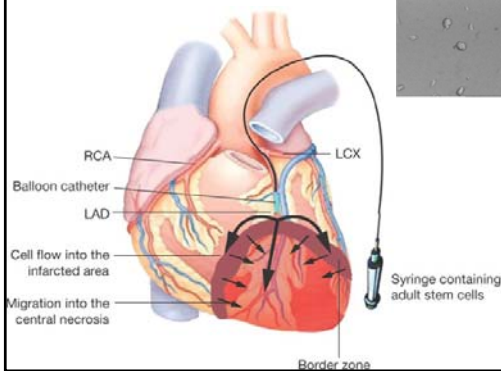
MSCTC Organizational Chart





Current Clinical Trials

ALLSTAR:
Heart-derived
stem cells for
patients with heart
attack

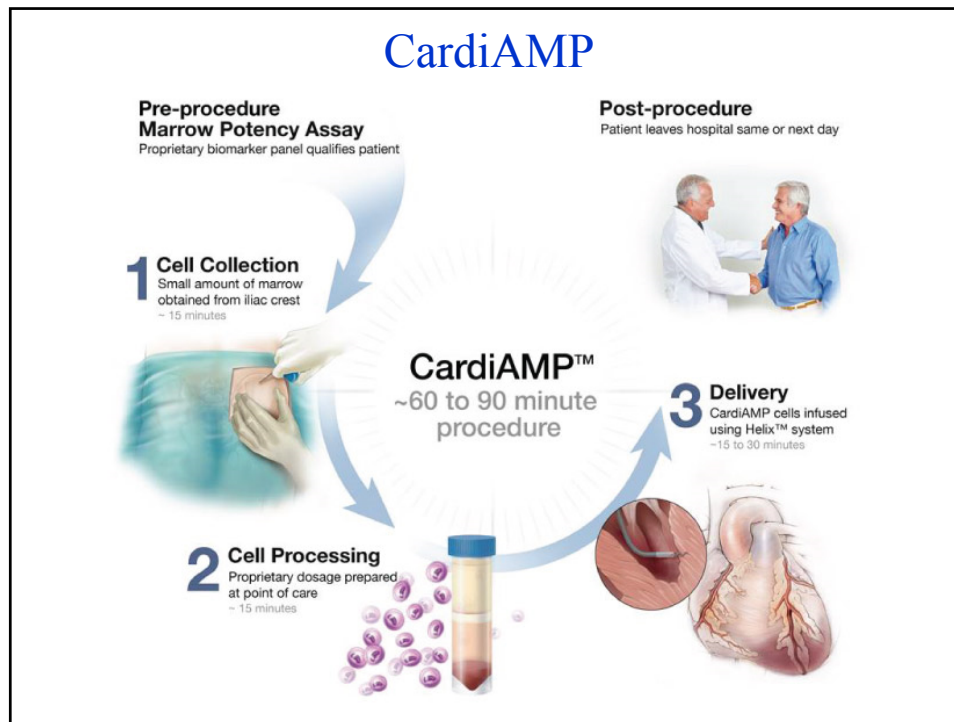


PreSERVE AMI: Bone
marrow-derived CD34+
cells for patients with
heart attack

Future Clinical Trials of Heart Repair

• CardiAMP

- Selected autologous bone marrow mononuclear cells delivered intramyocardially to repair cardiac tissue in patients with heart failure
- Initial evaluation of clinical study requirements underway by KU
- CDA has been signed



Future Clinical Trials of Heart Repair

• EXCELLENT

- Multicenter Phase III study of cardiac repair in patients with heart attack and reduced heart function
- Peripheral blood CD34+ stem cells will be expanded in a proprietary StemXpand automated cell processing system and injected using a helical needle
- Collaboration with CellProthera
- Possible long-term stem cell manufacturing for supply in US if site approved
- Site visit tentatively mid to late summer

Future Clinical Trials for Stroke

ACTIsSIMA

- Modified adult bone marrow stem cells (SB623) for patients with motor deficiency following an ischemic stroke
- US Biotech company sponsoring trial
- Study to start in near future

ACTIsSIMA

ClinicalTrials.gov

A service of the U.S. National Institutes of Health

A Study of Modified Stem Cells in Stable Ischemic Stroke

This study is ongoing, but not recruiting participants.

Sponsor:

SanBio, Inc.

Information provided by (Responsible Party):

SanBio, Inc.

ClinicalTrials.gov Identifier:

NCT01287936

First received: January 27, 2011

Last updated: November 16, 2015

Last verified: November 2015

[History of Changes](#)

[Full Text View](#)

[Tabular View](#)

[No Study Results Posted](#)

[Disclaimer](#)

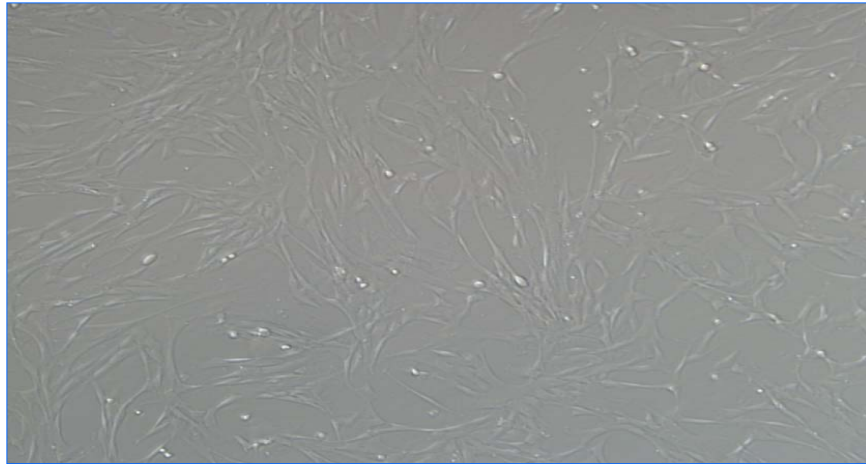
[How to Read a Study Record](#)

► Purpose

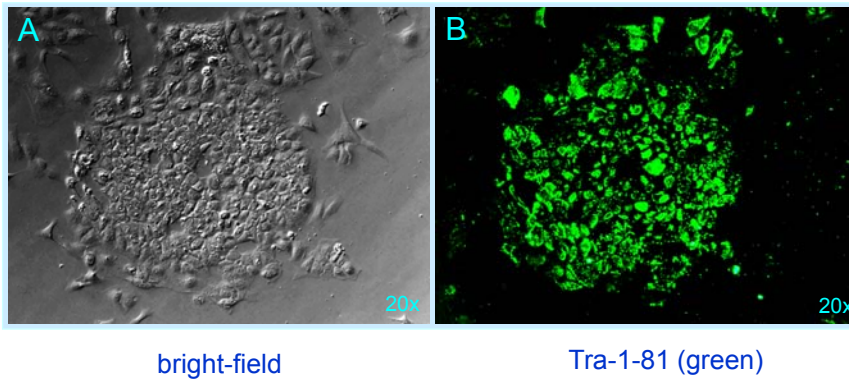
The primary purpose of the clinical study is to determine the safety of a modified stem cell **SB623** when administered to **chronic, stable ischemic stroke patients**. A second purpose is to determine whether **SB623** might improve stroke symptoms. Chronic, stable ischemic stroke patients must be **between 6 and 60 months after their stroke**, and with only this one prior stroke, and with no further improvement from physical therapy.

Condition	Intervention	Phase
Chronic Ischemic Stroke	Biological: SB623	Phase 1 Phase 2

Umbilical Cord-derived Mesenchymal Stem Cells (UC-MSCs)



Human iPS Cells



Areas of Research Focus

- Cancer and Immunotherapy
- Stroke and Neurodegenerative Disease
- Cardiac and Vascular Disease
- Musculoskeletal Disease and Trauma



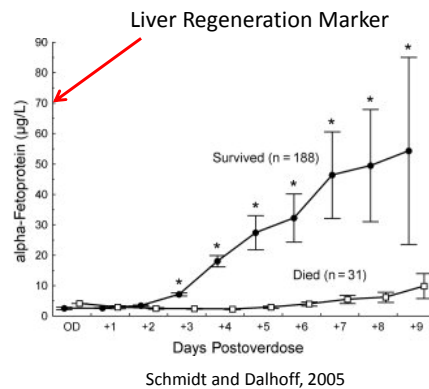
Current Pre-Clinical Projects

- **Graft vs. Host Disease (GvHD)**
 - Collaboration with University of Kansas Cancer Center
 - FDA teleconference was held on 2/5 - approved for preclinical work
 - IND to be written and submitted for FDA approval to conduct a Phase I human clinical study

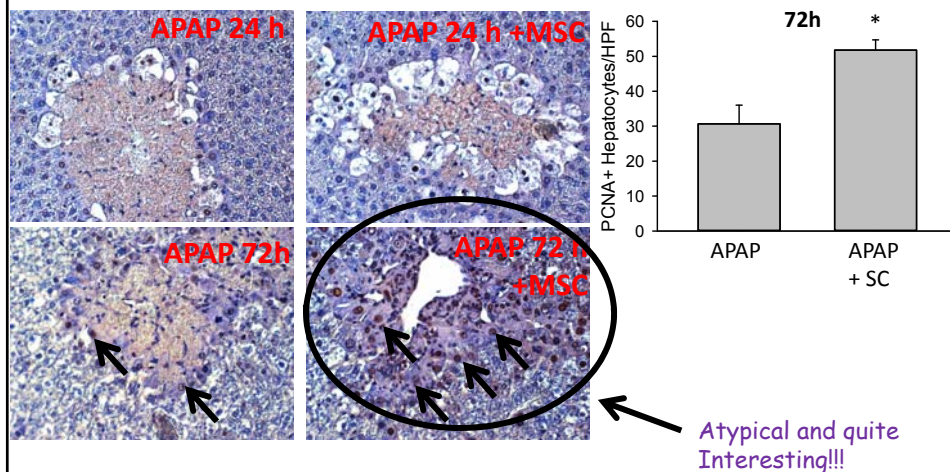


Liver Regeneration Predicts Survival in Patients with Acetaminophen Overdose

- Liver has native potential for regeneration
- However, after an acute liver injury, some patients will progress to an advanced state called Acute Liver Failure
- Mesenchymal stem cells may be able to stimulate regeneration in these patients, providing an entirely novel therapeutic option



Enhanced Liver Regeneration in MSC Post-treated Mice 72h after Acetaminophen Dose



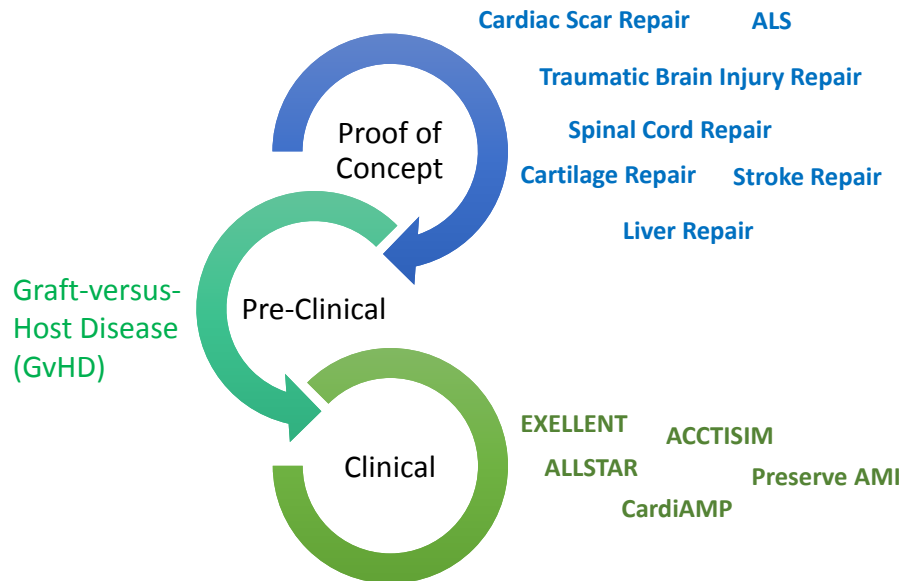
Additional KUMC Collaborations

- **Amyotrophic Lateral Sclerosis (Lou Gehrig's disease)**
 - KUMC, Dept. of Neurology, Dept. of Anatomy and Cell Biology
 - WJMSCs shown to produce cytokines believed to be important in nerve repair
- **MI Scar Repair**
 - KUMC, Cardiovascular Research Institute
 - Animal studies to begin 1st Qtr 2016
- **Cartilage Repair**
 - KUMC, Dept. of Orthopedic Surgery
 - WJMSCs being evaluated to determine their ability to differentiate into chondrocytes, the cells that generate and maintain cartilage matrices

Additional Internal Collaborations

- **Spinal Cord Repair**
 - KUMC, Dept. of Molecular and Integrative Physiology/Dept. of Pathology and Laboratory Medicine
 - WJMSCs being evaluated for the capacity to differentiate into neurons
- **Stroke and Traumatic Brain Injury Repair**
 - KUMC, Dept. of Rehabilitation Medicine
 - WJMSCs being evaluated for the capacity to differentiate into neurons

Project Pipeline

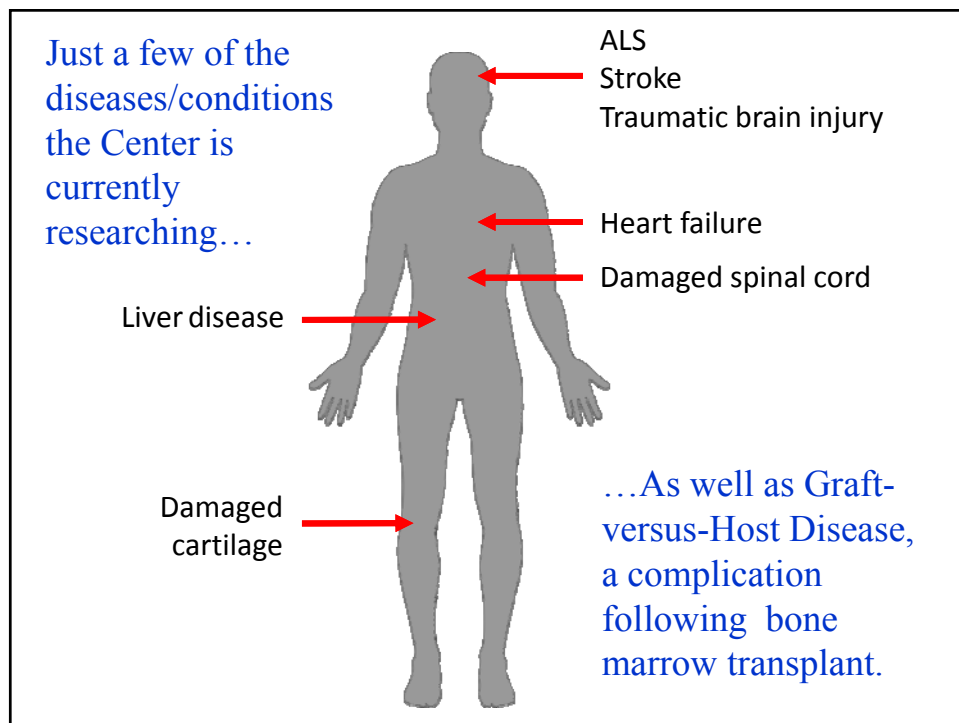
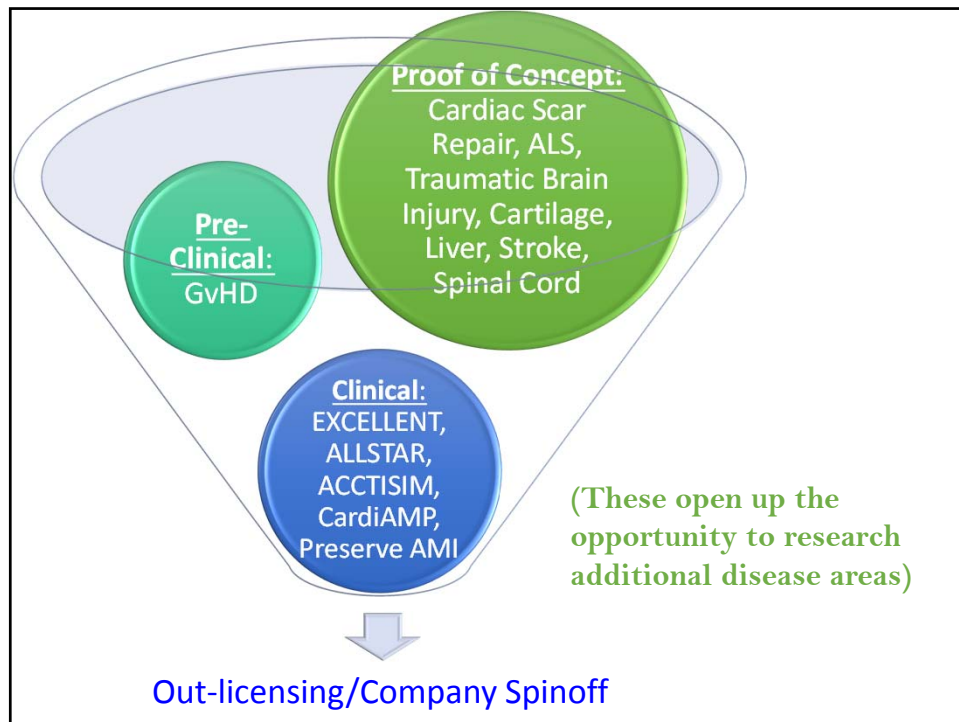


FDA Clinical Trial Process

Investigational New Drug Application (IND)
 Researcher files an IND with the FDA to begin testing the treatment in people.



New Drug Application (NDA) Submitted to the FDA and contains all data gathered to date about the drug. An NDA may exceed 100,000 pages.





NCI-CC
A Cancer Center Sponsored by the
National Cancer Institute

THE UNIVERSITY OF KANSAS
CANCER CENTER

BEST
HOSPITALS
US NEWS
& WORLD
REPORT
2015


Advances in Stem Cell Transplantation and Cellular Therapeutics

Dr. Joseph McGuirk
 Medical Director, Blood and Marrow Transplantation
 Division Director, Hematologic Malignancies & Cellular Therapeutics





Sources of Stem Cells


Bone Marrow




Peripheral Blood Stem Cells (PBSC)



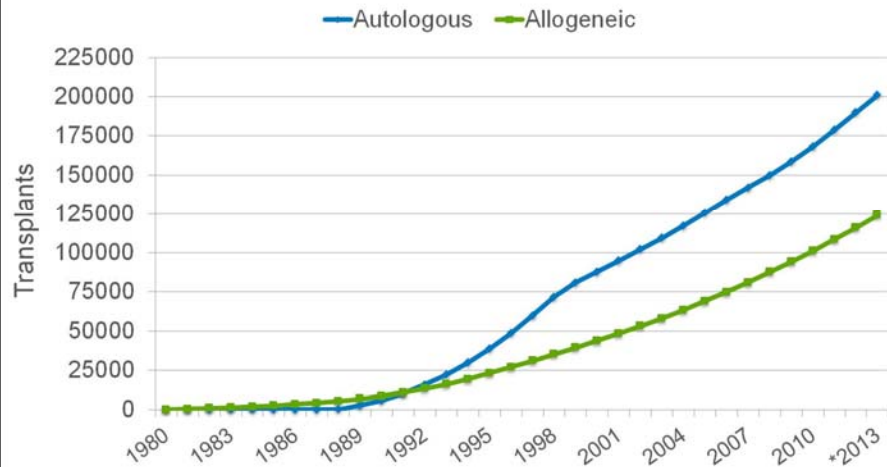
Cord Blood



June 1999



Cumulative Plot of Transplant Recipients in the US by Transplant Type



* 2013 Data incomplete

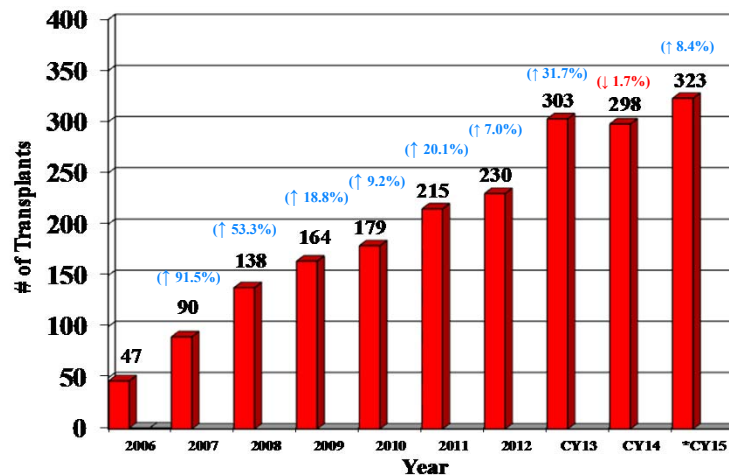
27



THE UNIVERSITY OF KANSAS
CANCER CENTER

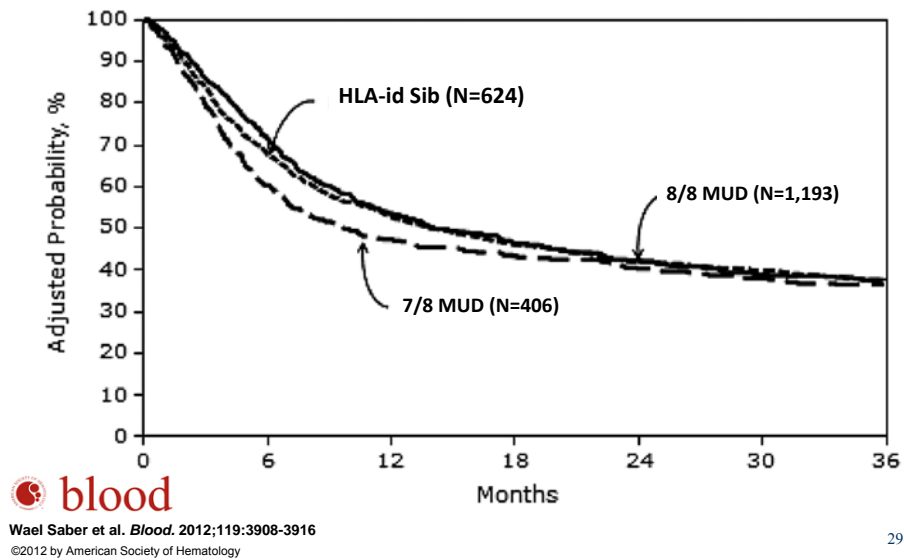


Blood & Marrow Transplant – Annual Volume (CY)



28

Adjusted probability of overall survival in 2223 adult AML patients by donor type

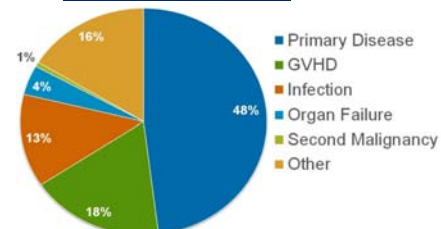


29

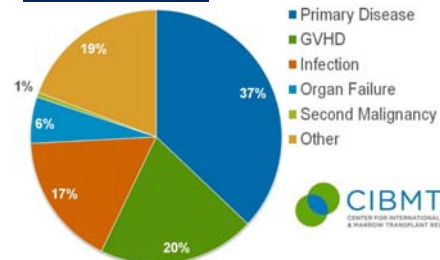
Causes of Mortality related to Allogeneic BMT

(2011-2012)

HLA-identical Sibling

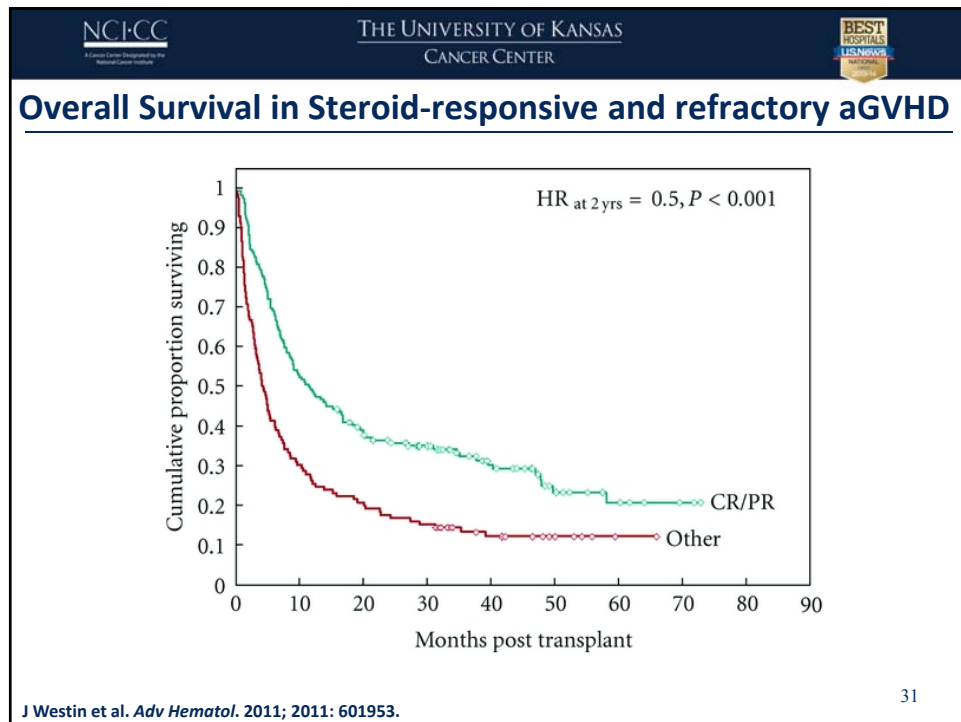


Unrelated Donor



CIBMTR[®]
CENTER FOR INTERNATIONAL BLOOD
& MARROW TRANSPLANT RESEARCH

30



THE UNIVERSITY OF KANSAS CANCER CENTER NCI-CC

MSCs for GVHD – Summary

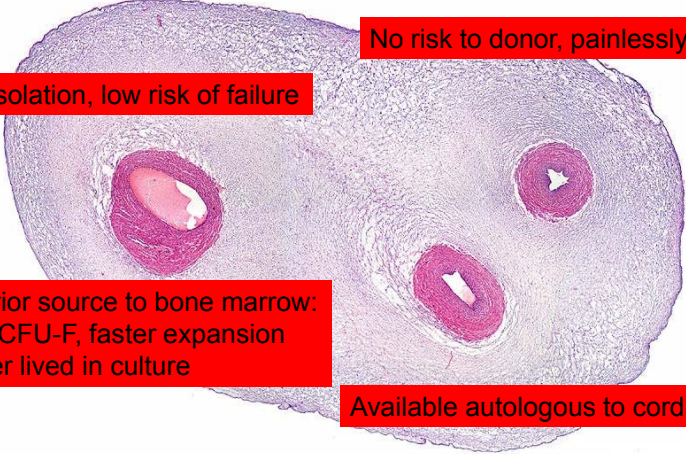
- 20 studies used MSCs for GVHD grade 2-4
- MSCs have a positive effect (varies between studies)
- Conditioning varied from myeloablative, nonmyeloablative, RIC, DLI, etc.
 - No apparent difference in response
- MSCs from HLA identical, haploidentical and unrelated, unmatched have been used
 - No apparent differences in response
- MSCs from fresh or frozen/thawed

Source: Mark Weiss

32

NCI-CC THE UNIVERSITY OF KANSAS CANCER CENTER BEST HOSPITALS US NEWS & WORLD REPORT

Wharton's Jelly Cells – the MSCs of the Umbilical Cord



No risk to donor, painlessly collected

Easy isolation, low risk of failure

Superior source to bone marrow:
More CFU-F, faster expansion
Longer lived in culture

Available autologous to cord blood

**Umbilical cord is not biohazardous waste.
It is a gold mine!**

Source: Mark Weiss 33

Objectives of the Center - II

- **Informing** the public on available adult, cord blood, and related stem cell therapeutic options
- Creating and maintaining a **database** of available stem cell clinical trials and therapies
- Foster a regional **network** of physicians trained in adult stem cell therapy

Dissemination of Information

- Website (www.kumc.edu/msctc)
- Compilation of an extensive resource for adult stem cell information
- Providing answers via emails/meetings
- Conferences

Midwest Conference on Cell Therapy and Regenerative Medicine



*September 16-17, 2016
Sheraton Overland Park, KS*

Objectives

- Continue to be a reliable and trustworthy source for practitioners who want up-to-date information on adult stem cell therapy
- Continue to build awareness of Center

Establishing Relationships



Archdiocese of Kansas City



Vatican
Monsgr. Tomasz Trafny
Head of Science and Faith Department
at the Pontifical Council for Culture

Establishing Relationships



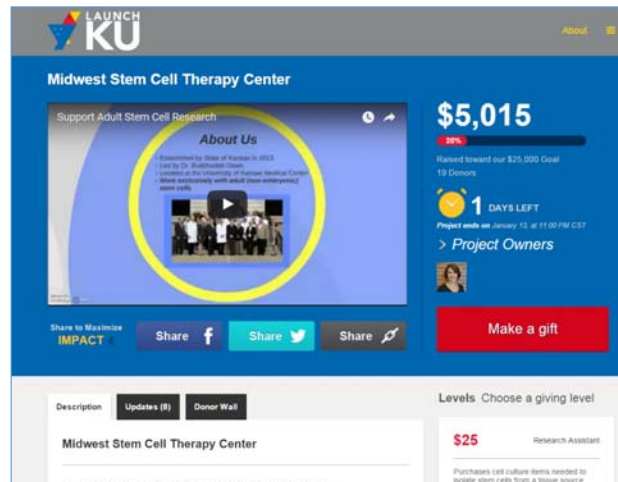
KC check-up

BioKansas



Establishing Relationships

- KU Communications departments
- KU Endowment
 - Pilot for new crowdfunding initiative



Donor Communications

James Levine, Director jlevine@midweststemcell.org
 Email: Monday, December 07, 2015 3:16 PM
 To: Lawrence, Michael <mlawrence@ku.edu>
 Subject: Project Update #1: Midwest Stem Cell Therapy Center

LAUNCH KU

MIDWEST STEM CELL THERAPY CENTER PROJECT UPDATE: ADULT STEM CELL RESEARCH: WE'VE COME A LONG WAY, BUT WE CAN DO MORE.

The initial concept of regenerative medicine dates all the way back to 350 BC, when Aristotle observed that a frog could grow back the lost tip of its tail. Slowly over time, but how it may change the way we treat diseases. It's been a therapy, a type of regenerative medicine, has gathered fuel.

The video shows key (but all) highlights in stem cell research over the last several decades. While researchers have come a long way at the Midwest Stem Cell Therapy Center we are working to advance adult stem cell treatments.

Midwest Stem Cell Therapy Center
 Published by Pauline Hopkins 11: November 24 at 3:22am '16

Where are adult stem cells found? Check out our latest update to find out!
<https://www.launchku.org/project/1306/updates/1>

Adult Stem Cells

Midwest Stem Cell Therapy Center
 Learn about the Center's latest research efforts and how you can help advance adult stem cell therapy.
 LAUNCHKU.ORG

We are Thankful...

We are so thankful to those who supported the Midwest Stem Cell Therapy Center this year. **There is still time to make your tax-deductible donation for 2015.**

Some of the diseases we're researching, including ALS and Graft-versus-Host Disease, have limited treatment options. Our early research shows we can expand treatment choices, possibly increasing survival rates and overall quality of life. The potential for adult stem cell therapy is truly limitless.

By supporting the Midwest Stem Cell Therapy Center, you are helping advance adult stem cell treatment research.

Make a difference. Advance the future of medicine.

GIVE

KU MIDWEST STEM CELL THERAPY CENTER
 The University of Kansas

The Future of Adult Stem Cell Research

Only one day left to fundraising campaign!

Our promise to you: We will continue to expand our adult stem cell research into other diseases and conditions, working hard to bring these therapies to patients.

Help make a difference. Advance the future of medicine.
 Visit www.launchku.org/MidwestStemCell to learn more.

GIVE

KU MIDWEST STEM CELL THERAPY CENTER
 The University of Kansas

MSCTC Fiscal Overview

The MSCTC is currently funded by:

- State of Kansas annual appropriation
- Donor giving routed through KU Endowment
- EVC discretionary KUEA fund for Advisory Board and other official hospitality expenses
 - “Official hospitality” needs to be added to the State budget bill
- Income received from GMP manufacturing and externally funded projects
- Clinical Trials

Prepared by R. Potter

Major Support from KU Medical Center and the Kansas Legislature

- Funds toward initial GMP construction, personnel salary and benefits
- Space and other key infrastructure support
- Administrative support, RI
- Brand recognition
- Abundance of collaborators
- Continued funding from the State of Kansas

Business Initiatives

Sponsored R&D

- **Nueterra**
 - Adipose MSC treatment for Osteoarthritis/Cartilage Repair
 - Project proposal being drafted by Nueterra for review
- **Stemodontics**
 - Isolation, recovery of dental pulp MSCs and long-term banking
 - Contract for business over the next 10 years in final stages
- **Applied Stemcell**
 - Gene Therapy for Aplastic Anemia
 - Contract in development
- **Cell Prothera**
 - Expanding bone marrow CD34+ cells using proprietary StemXpand Automated system
- **KUCC and Stowers**
 - Cord Blood Stem Cell Expansion for transplant
 - Cord Blood IRB approved, work to start in 2016

Business Initiatives

Clinical Trials

- **Capricor**
 - ALLSTAR – MI Scar repair
- **Sanbio**
 - ACTIsSIMA – Stroke repair

Sale of Stem Cells

- Developed process
- Documents being developed

Grant Initiatives

- Gene Therapy for Aplastic Anemia patients
 - Applied StemCell submitted an SBIR grant
 - Included KUCC, Stowers and MSCTC
 - Opportunity to resubmit following company funded proof of concept
- Gene Therapy for Severe Cellular Immunodeficiency patients
 - Includes KUCC and Stowers
 - Applying for an NIH U01 grant due February 8, 2016

Philanthropic Initiatives

- Crowdfunding
- Working with KU Communications departments to increase awareness
- Midwest Stem Cell Therapy Center Website

FY15 Expense Report

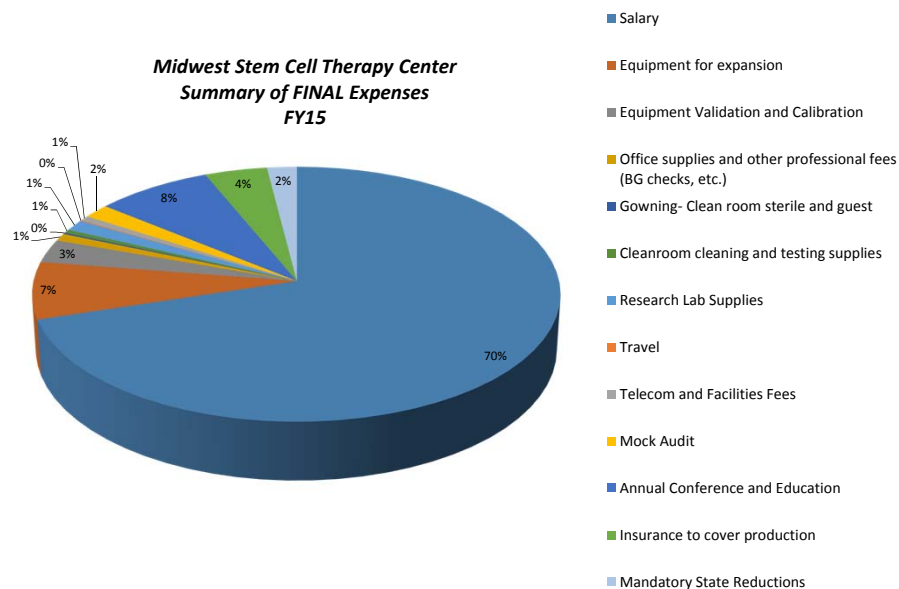
State appropriations

- Received \$754,500 in July 2014

Total State FY15 Midwest Stem Cell Therapy Center Allocation		\$ 754,500.00
Expenses		
Salary	\$ 529,648.95	70.2%
Equipment for expansion	\$ 54,702.12	7.3%
Equipment Costs	\$ 22,282.75	3.0%
Office Supplies and other professional fees (BG checks, etc.)	\$ 7,037.20	0.9%
Gowning- Clean room sterile and guest	\$ 1,413.90	0.2%
Cleaning and testing supplies	\$ 3,290.21	0.4%
Research Lab Supplies	\$ 10,483.07	1.4%
Travel	\$ 708.01	0.1%
Telecom and facilities fees	\$ 4,900.03	0.6%
Mock Audit	\$ 13,500.00	1.8%
Annual Conference	\$ 59,493.92	7.9%
Advisory Board meeting expenses (quarterly meetings)	\$ 44.28	0.0%
Insurance to cover production	\$ 31,800.00	4.2%
Mandatory State reductions	\$ 15,168.00	2.0%
	<u>\$ 754,472.44</u>	

Did not receive \$26 invoice from HP before FY A/P cutoff, total sent back to state: \$27.56

FY15 Expense report



FY15 Sources and Spends

FY15 Other Revenue

- GMP Manufacturing Income and Philanthropic contributions

<u>FY15 Other Revenue</u>	
GMP Manufacturing (Lifecells)	6,319.54
KU Cancer Center transfer for project collaboration	77,323.00
Philanthropic transfer for cell expansion equipment	147,795.00
<i>Subtotal of revenue</i>	<u>231,437.54</u>
<u>FY15 Other Expenses</u>	
Capital Equipment	\$ 80,672.84
Equipment (validation, service agreements, room validation)	\$ 1,294.30
Schendel	\$ 568.55
Propharma QA/QC (split cost with STC)	\$ 1,400.00
Gowing- clean room sterile and guest	\$ 252.74
Office supplies for GMP suites and other professional fees	\$ 156.50
Cleaning and Testing supplies	\$ 2,422.47
Research Lab supplies	\$ 18,026.95
GMP Facility modification	\$ 1,778.00
Cell Expansion equipment	\$ 103,588.83
<i>Subtotal of expenses*</i>	<u>\$ 210,161.18</u>
FY15 Percent of Expenses to Income	91%

FY15 Sources and Spends

EVC Advisory Board and Official Hospitality via KUEA

- Received one time allocation of discretionary funds of \$15,000 in August 2014 to cover all Advisory Board and Official Hospitality related expenses (e.g. conference) as that language is currently not in the legislative bill for the State appropriation funds

<u>FY15 KUEA-EVC MSCTC Advisory Board and Official Hospitality</u>	
One time allocation from EVC	\$ 15,000.00
<u>FY15 KUEA-EVC MSCTC Board and Hospitality Expenses</u>	
Annual Conference hospitality	\$ 890.00
Visitor hospitality expenses	\$ 165.85
Advisory Board expenses	\$ 2,526.23
Legislative update meeting	\$ 3,209.92
Professional and office fees not allowed on state funds	\$ 162.36
<i>Subtotal of expenses*</i>	<u>\$ 6,954.36</u>
FY15 Percent of Expenses to Income	46%

FY15 Sources and Spends

FY15 Other Revenue – KUEA Donations

- ALS “Ice Bucket Challenge” donations

FY15 KUEA ALS Ice Bucket Challenge donations	\$ 48,647.90
<hr/>	
FY15 KUEA ALS related Expenses	
Credit card fees	\$ 1,151.74
Nishimune support	\$ 2,531.17
Transfer to Neurology for ALS stem cell research	\$ 46,112.08
Subtotal of expenses	\$ 49,794.99
<hr/>	
FY15 Percent of Expenses to Income	102%

- General gift donations made to the MSCTC

FY15 KUEA MSCTC General Donations	\$ 2,480.00
<hr/>	
\$90 of total contributions were named in honor of Marjorie Prentice	

No funds were spent in FY15, most general donations occurred late FY

FY15 Sources and Spends

FY15 Summary – Percent Expenses to Income from all sources

<hr/>	
FY15 All Income	
State Appropriation	\$ 754,500.00
GMP Manufacturing	\$ 6,319.54
KU Cancer Center transfer for equipment for project collaboration	\$ 77,323.00
Philanthropic transfer for cell expansion equipment	\$ 147,795.00
EVC Advisory board and official hospitality one time allocation	\$ 15,000.00
ALS Ice Bucket Donations	\$ 48,647.90
MSCTC General Donations	\$ 2,480.00
Total of all FY15 Income	\$ 1,052,065.44
<hr/>	
FY15 All Expenses	
State Appropriation	\$ 754,472.44
GMP Manufacturing related income and cell expansion and equip.	\$ 210,161.18
Advisory Board and official hospitality	\$ 6,954.36
ALS Ice Bucket - Neuro support	\$ 48,643.25
KUEA online credit card processing fees	\$ 1,151.74
Total of all FY15 expenses	\$ 1,021,382.97
<hr/>	
FY15 Percent of Expenses to income	97%

Thank you.

MIDWEST STEM CELL
THERAPY CENTER

KU MIDWEST STEM CELL
THERAPY CENTER
The University of Kansas