



Kansas State Board of Pharmacy: An Overview

Alexandra Blasi, JD, MBA

Executive Secretary

800 SW Jackson, Suite 1414

Topeka, KS 66612-1244

alexandra.blasi@pharmacy.ks.gov

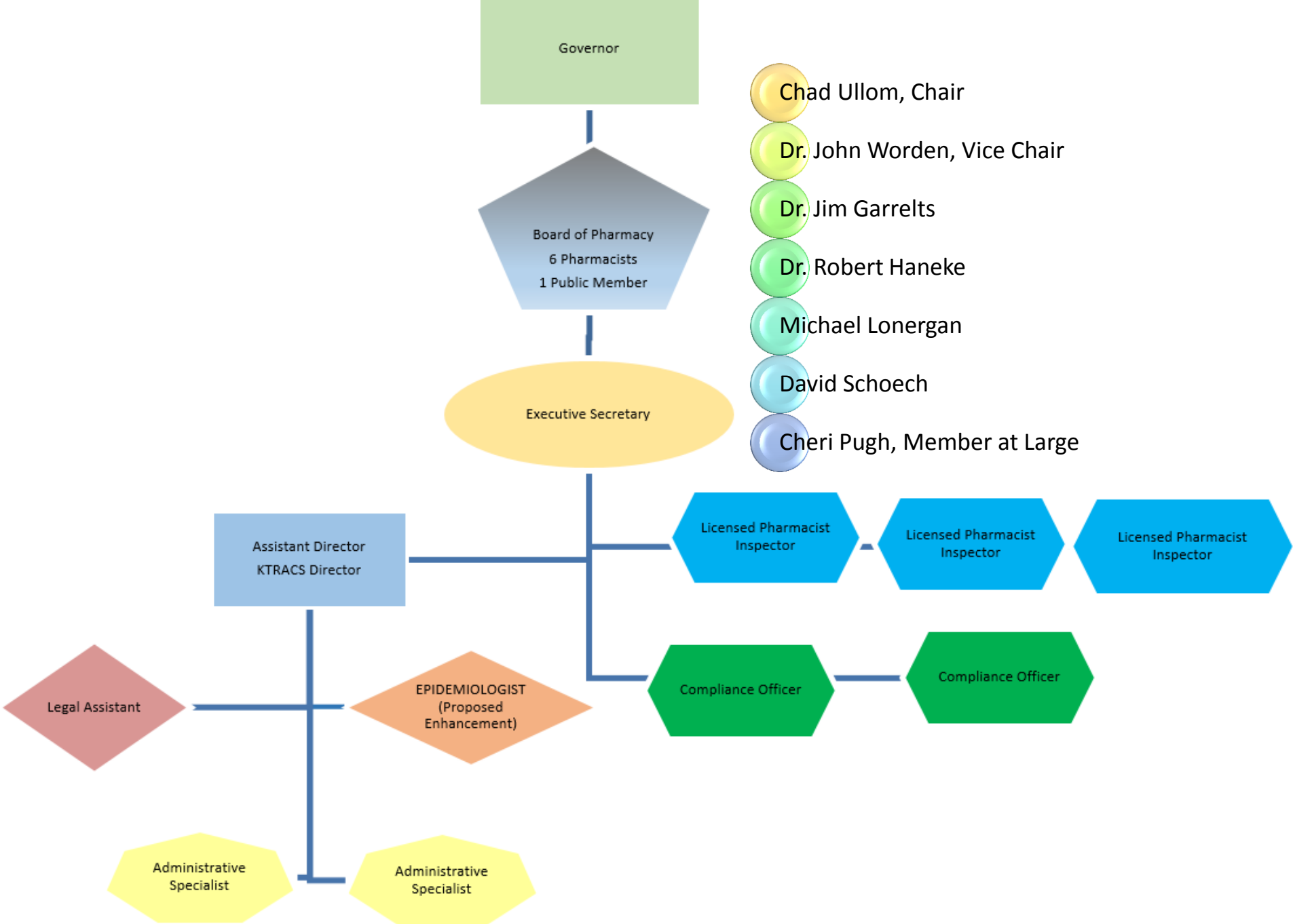
785-296-4056





Agency Mission

- The mission of the Kansas Board of Pharmacy is to ensure that all persons and entities conducting business relating to the practice of pharmacy in this state, are properly licensed and registered. This will protect the public's health, safety and welfare as well as promote the education and understanding of pharmacy related practices.
 - Assurance of statutory compliance regarding compounding and dispensing of prescription drugs and maintenance of professional practice standards
 - Assurance of statutory compliance regarding manufacture, distribution, and sale of prescription and non-prescription drugs and devices
 - Protection of the public against the unprofessional, improper, unauthorized, and unqualified practice of pharmacy
 - Assurance of the competency of licensed pharmacists by requiring passage of examinations and continuing education thereafter
 - Prevention of drug diversion and drug abuse
 - Education on pharmacy and prescribing trends





Functions

Licensing and Registration

- License competent and qualified individuals
 - Pharmacist and Intern/Student
 - Technician
- Facility Registration
 - Pharmacy, Retail Dealer, Manufacturer, Distributor, Lab, etc.



Investigation and Enforcement

- Regulate the profession
- Inspect registered facilities
- Discipline for violations of Kansas law
- Refer matters to DEA, KBI, FDA and other regulatory agencies
- Audit CE records
- Monitor reporting to K-TRACS and NPLeX



Administrative

- K-TRACS (Prescription Monitoring Program)
- Day to day activities
- Budget
- Personnel





Statistics of Active Licensees

	FY08	FY09	FY10	FY11	FY12	FY13	FY14	FY15	FY16	FY17 est
Ambulance	141	156	126	148	150	150	174	161	173	173
Analytical Lab	31	30	26	30	28	28	30	26	29	29
County Health/ Family Planning	89	89	106	117	110	110	113	103	105	105
Distributor	802	1,504	875	1,021	976	976	1,074	1,043	1,100	1,100
Durable Medical Equipment		325	434	434	435	435	475	421	438	438
Institutional Drug Room	51	51	54	59	54	54	80	55	56	56
Intern	803	803	1,133	1,149	1,199	1,199	1,171	1,165	1,158	1,158
Manufacturer	13	19	17	18	16	16	13	13	15	15
Non-resident pharmacy	424	424	491	591	584	584	842	839	960	960
NPD Distributor	74	74	78	88	73	73	106	107	110	110
Pharmacists	3,980	4,362	4,467	4,727	4,842	4,842	5,228	5,197	5,364	5,364
Pharmacy	836	836	864	891	893	893	907	901	924	924
Research&Teaching	71	88	63	93	80	80	105	90	99	99
Retail Dealer	1,904	1,997	1,655	1,577	1,529	1,529	1,514	1,528	1,515	1,515
Sample Distributor	22	45	34	47	46	46	52	44	41	41
Technicians	5,415	7,434	6,245	6,554	6,700	6,700	7,242	7,377	7,600	7,600



Functions

- Controlled Substances Act, KSA 65-4101 *et seq.*
- Continued Quality Improvement Program, KSA 65-1695 *et seq.*
- Prescription Monitoring Program Act (K-TRACS), KSA 65-1681 *et seq.*
- Methamphetamine Precursor Act, KSA 65-16,101 *et seq.*
- Utilization of Unused Medications Act, KSA 65-1668 *et seq.*

Year	FMV
2009	\$ 668,796.04
2010	\$ 734,334.26
2011	\$ 891,196.89
2012	\$ 1,406,738.52
2013	\$ 2,227,436.64
2014	\$ 1,911,407.98
2015	\$ 2,915,849.63
Grand Total	\$ 10,755,759.96



Budget

- Fee-funded agency
- Reduced licensing fees in 2014 at Governor's request
- Fines to State General Fund



Committees

- PMP Advisory Committee
 - K-TRACS
- Collaborative Drug Therapy Management Committee
 - Collaborative Practice (physician-pharmacist)
- Committee on Impaired Pharmacy Practice
 - KsPRN – Kansas Pharmacists' Recovery Network
- Continuing Education

PMP Advisory Committee

MEMBERSHIP

2 Licensed
Pharmacists

Nominated
by Kansas
Pharmacists
Assn

Nominated
by Kansas
Pharmacists
Assn

1 Licensed
Dentist

Nominated
by Kansas
Dental Assn

2 Licensed
Physicians

Nominated
by Kansas
Medical
Society

Nominated
by Kansas
Assn of
Osteopathic
Medicine

1 Kansas
Bureau of
Investigation

Nominated
by Attorney
General

2 Education

KU School of
Medicine,
Nominated
by Dean

KU School of
Pharmacy,
Nominated
by Dean

1 Kansas
Hospital
Association

Nominated
by Kansas
Hospital
Assn

Other persons authorized to prescribe or dispense scheduled substances and drugs of concern,
recognized experts and representatives from law enforcement

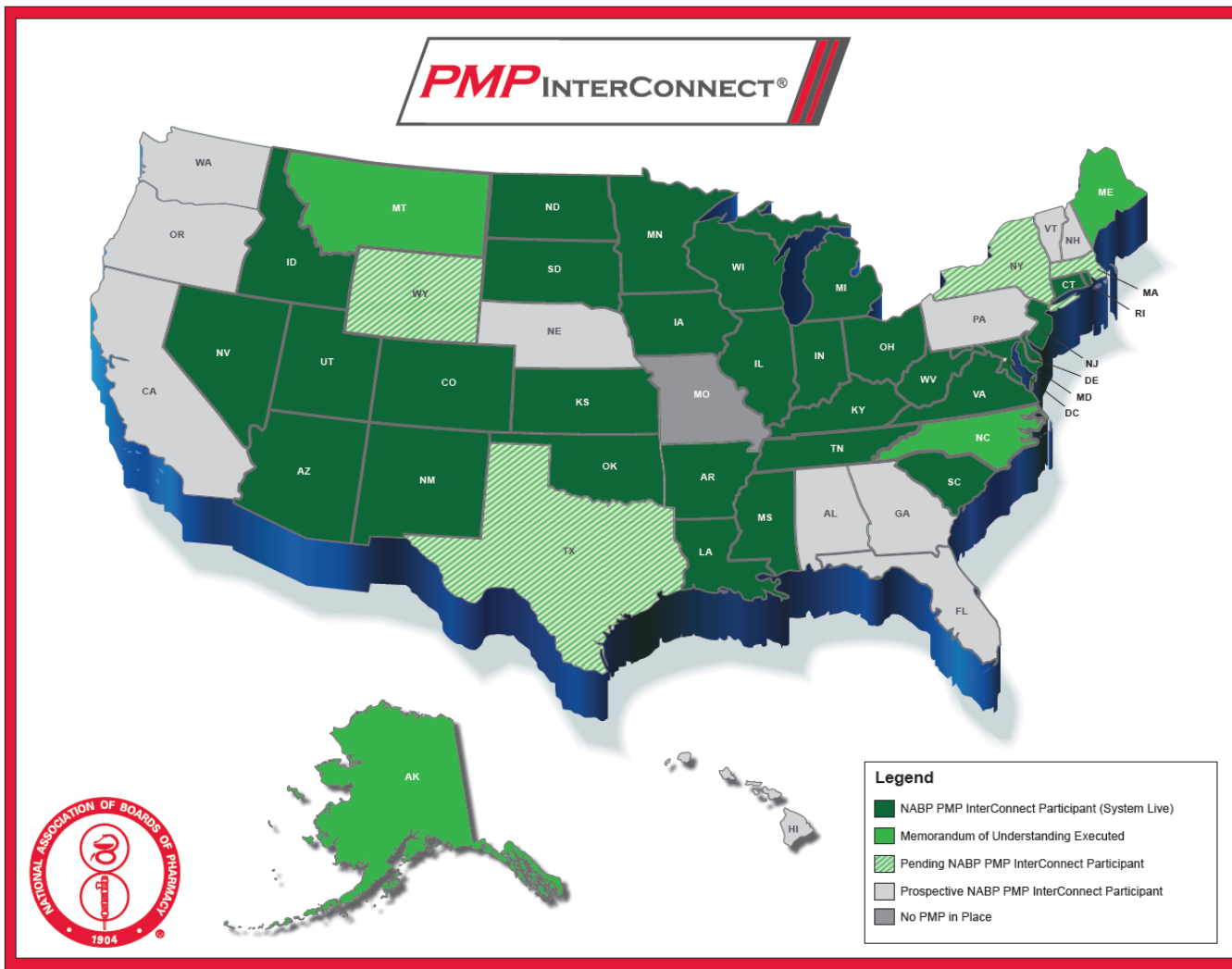


What is K-TRACS?

- ❖ K-TRACS is Kansas' Prescription Monitoring Program (PMP). K-TRACS monitors Schedule II-IV controlled substance prescriptions as well as drugs of concern dispensed within the state as reported by pharmacies and other dispensers
- ❖ K-TRACS is a web-accessible database, available 24 hours, that provides tools to help address one of the largest threats to patient safety in the state of Kansas: the misuse, abuse and diversion of controlled pharmaceutical substances



Integration with Other States



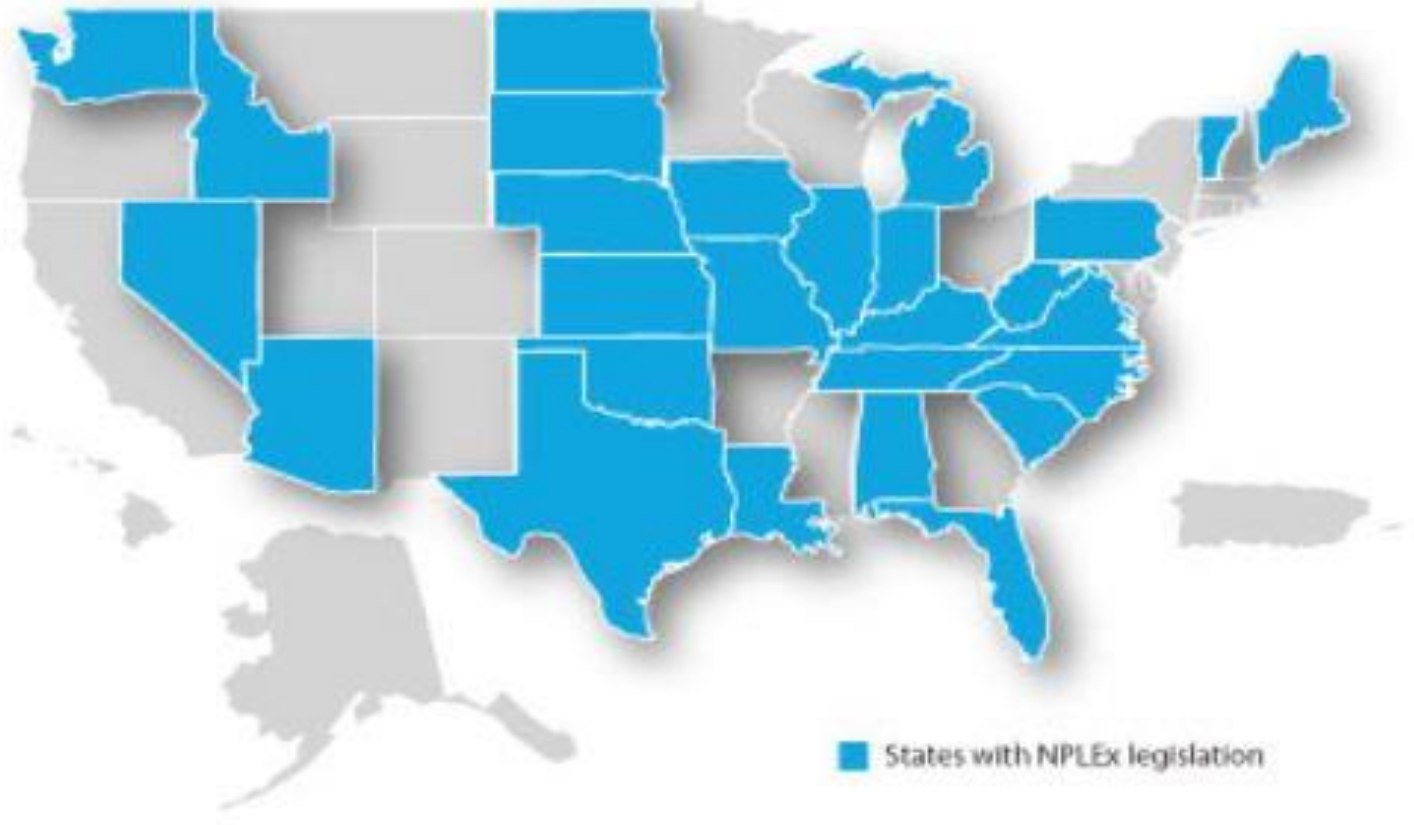


What is **NPLEx**TM?

- ❖ The National Precursor Log Exchange (NPLEx) is a real-time electronic logging system used by pharmacies and law enforcement to track sales of over-the-counter (OTC) cold and allergy medications containing precursors to the illegal drug, methamphetamine.
- ❖ There are approximately 567 pharmacies that are actively using NPLEx in Kansas. Those pharmacies that do not sell ephedrine or pseudoephedrine items over the counter are exempt from reporting.



NPLEx in Other States





Current Happenings

- New Executive Secretary
- Licensing Software
 - Web-based, custom system
 - Electronic applications and renewals
 - Forms revision project
 - Analysis and Reporting
- K-TRACS
 - Enhancements
 - Funding Search
 - Statistical Analysis - KDHE
- Practice Act Update
- Board Strategic Planning
- Website Redesign
- CE Audit