

Informational Briefing House Bill No. 2099 Concerning the Student Data Privacy Act
House Committee on Education

Good Afternoon, Chairman Highland and Members of the Committee,

I'm Max Wilson and I want to thank you for the opportunity to present this testimony today. I was the Executive Director of Prevention and Recovery Services here in Topeka for 20 years and have been retired for 3 ½ years. I'm still active in a number of community initiatives including Safe Streets Coalition and its substance abuse committee, and Chairman of grant review committees of both the Topeka-Shawnee County Alcohol and Drug Abuse Advisory Council and the 3rd Judicial District's Juvenile Corrections Advisory Board.

All five public school districts in Shawnee County have participated in the Communities that Care Student Survey for the past 15 years. This survey has been key to our ability to adopt and implement the Strategic Prevention Framework which includes the following elements:

1. Assessment: Profiling needs and response capacity
2. Capacity: Mobilizing and building needed capacity
3. Planning: Developing a prevention plan
4. Implementation: using programs, policies, and strategies based on what is known to be effective
5. Evaluation: Considering program effectiveness and sustaining what works well.

The Communities that Care Survey has informed us with data to help us initiate all 5 steps of the Strategic Prevention Framework with annual updates based on the data. Fortunately, Shawnee County has a 79.7% survey participation rate which makes our data quite valid and reliable.

Programs and services that are supported by the Communities that Care Survey include Prevention and Recovery Services' Community Prevention Program and Youth Evaluation Program; Kansas Children's Service League's Drug Endangered Children's Initiative and Truancy Prevention Program; Big Brothers-Big Sisters Mentoring Program; Boys-Girls Club; CASA, and others.

I urge you to support the changes in this bill which will allow a parent or legal guardian to opt out instead of opt-in for the Communities that Care Survey participation, since there is: no personally identifiable student data; each student is informed that participation in the survey is voluntary; and the results of the survey are reported only as aggregate data.

In order to continue our ability to plan and sustain substance abuse prevention programs and services, all of which require an evidenced-based evaluation tool such as the Communities that Care Survey, we need to maintain this survey at a high participation rate. This opt-out provision will help ensure that we will be able to continue our effective prevention programs and services.

I've included in this testimony on pages 3 and 4 examples of how the Communities that Care Survey helps us target our strategies to address substance abuse issues identified in the survey. This survey also helps to identify successes over time. If you'll look at pages 3 and 4, you'll see graphs depicting student responses indicating the percentage of youth who reported having used alcohol at least once within the past 30 days, binge drinking on at least one occasion with the past two weeks, cigarette use within the past 30 days, and any of marijuana use within the past 30 days.

As you'll note, the trend lines are decreasing from 2010 to 2014 for alcohol and cigarette use, except for marijuana which has had its ups and downs in Shawnee County. Historically, marijuana use in Shawnee County has been higher than the state average. As a result, there are a number of marijuana initiatives that are addressing this problem as identified by both the Communities that Care Survey and by treatment data. Marijuana addiction is also the chief presenting addiction problem among adolescents entering state-funded treatment in Kansas.

Thanks for your support of this bill which will help us to continue to provide evidence-based and effective prevention strategies in Shawnee County and in our State.

Only Counties with greater than 20% participation are reported.

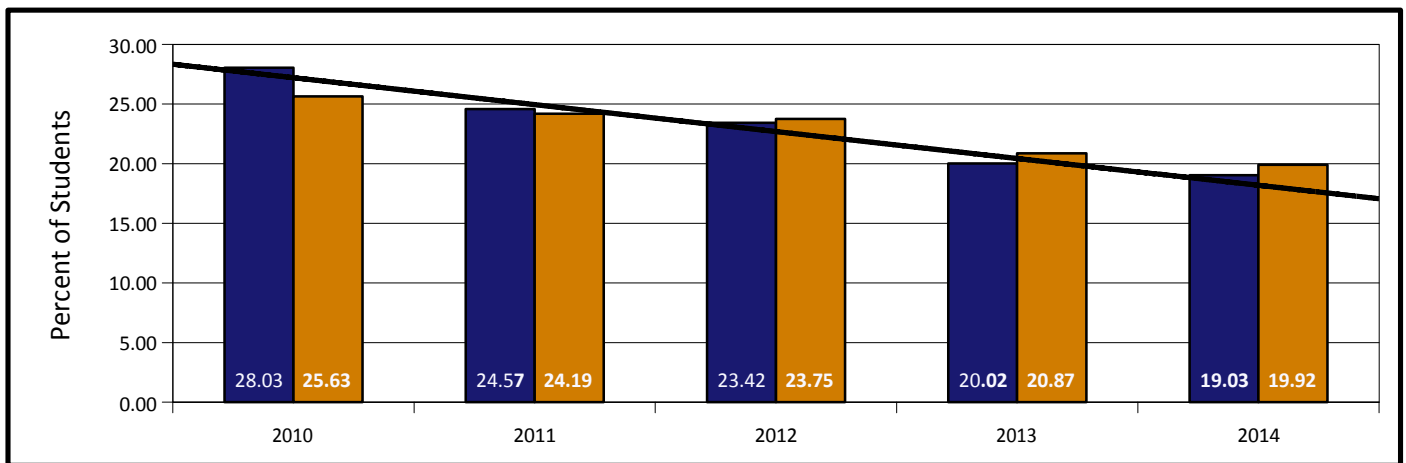
Shawnee County Participation Rate: 79.7%

30-Day Alcohol Use

The percentage of students in grades 6, 8, 10 and 12 reporting any use of alcohol within the past 30 days (percent data) The community and state trend lines are: **Decreasing**

Shawnee County Data

Kansas State Data



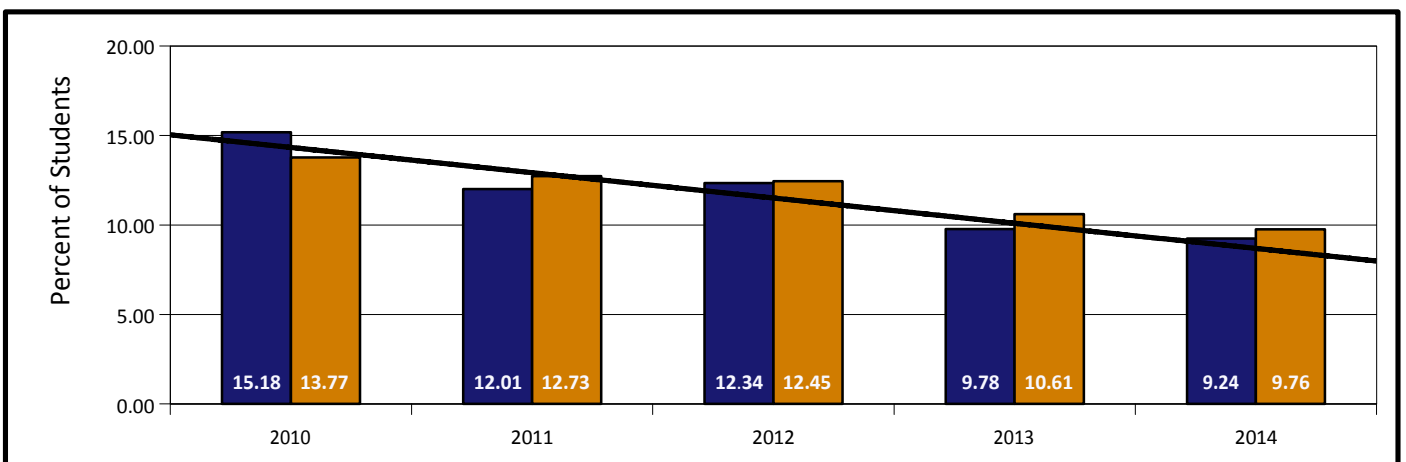
Two Week Binge Drinking

The percentage of students in grades 6, 8, 10 and 12 reporting having five or more drinks in a row on at least one occasion within past two weeks (percent data)

The Community and State trend lines are: **Decreasing**

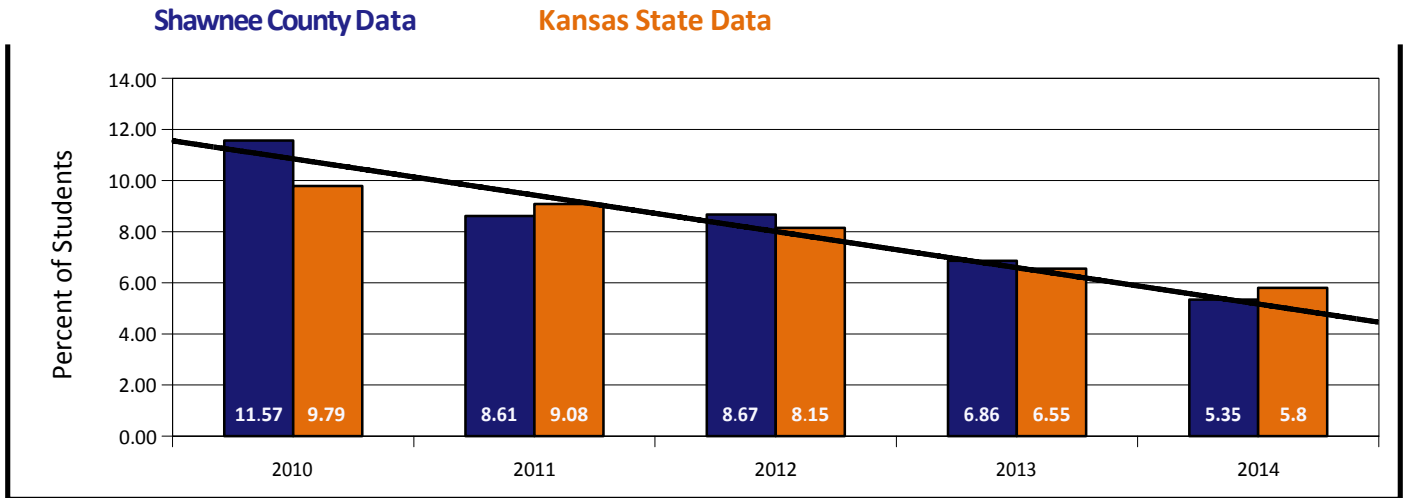
Shawnee County Data

Kansas State Data



30-Day Cigarette Use

The percentage of students in grades 6, 8, 10 and 12 reporting any use of cigarettes within the past 30 days (percent data) The Community and State trend lines are: **Decreasing**



30-Day Marijuana Use

The percentage of students in grades 6, 8, 10 and 12 reporting any use of marijuana within the past 30 days (percent data)

